

Factory Direct Patio Covers Lic. # 883800

Project #9-45

August 11, 2019 Rev. 3

To:

E-mail

2691

Quote:

Amerimax, Alumawood, Solid, Non-Insulated Newport ROOF MOUNT Patio Cover 11 ft. proj. (12ft. 2in. w/Full Wrap and Tails) x 20 ft. wide. Double 3x8x19 ½ ft. Headers. Three (3) Std. Alumawood posts on concrete slab. Posts at approx. 10 ft. from wall/hanger. Posts at approx. 8 ½ ft. o.c. Approx. 18 in. side and 12 in. front overhangs. Height to roof mount ledger/hanger approx. 9 ft. Slope cover 3 in. Posts at 10ft from roof ledger or 10 ½ ft. from the wall approx. Includes gutter and downspout.

Total sq. ft. - 220	= \$2,530.00 Material
	- 700.00 Labor
	185.00 Extra header (Double header)
	270.00 2x6x20 Roof ledger w/ wood insert
	- 50.00 Ledger labor
	200.00 (10) 10 in. Roof brackets
	- 50.00 Roof bracket labor
	<hr/>
	\$3,985.00 Total (Price valid for 60 days)

Mat'l: \$3185.00

Labor: \$800.00

Options: 1) Wire runs, \$50.00 ea.

2) Roof bracket cost removed if customer supplies brackets. Labor remains.

Notes: 1) Slope cover ¼ in./ft. (3 inches)

3) ICC ESR1398 Engineering, 110mph wind, Exposure C. Trib 6.0

Warranty – Material - Limited Lifetime from Manufacturer, Amerimax
Labor and Workmanship – 10 years

Color: Ceiling, Mohave Tan Other, Adobe

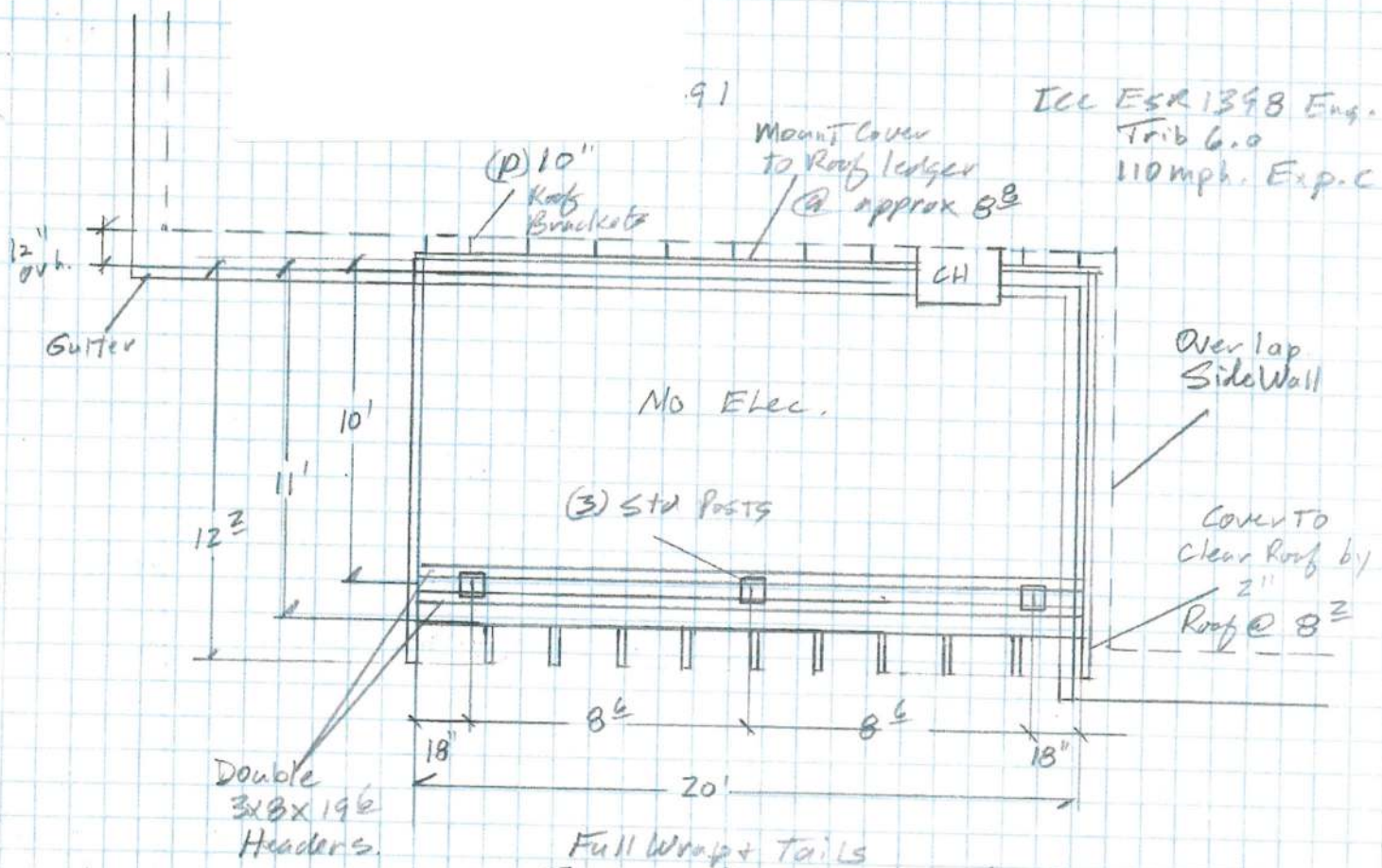
End Design: Corbel

Install: Pending

Completion: In 1-2 days

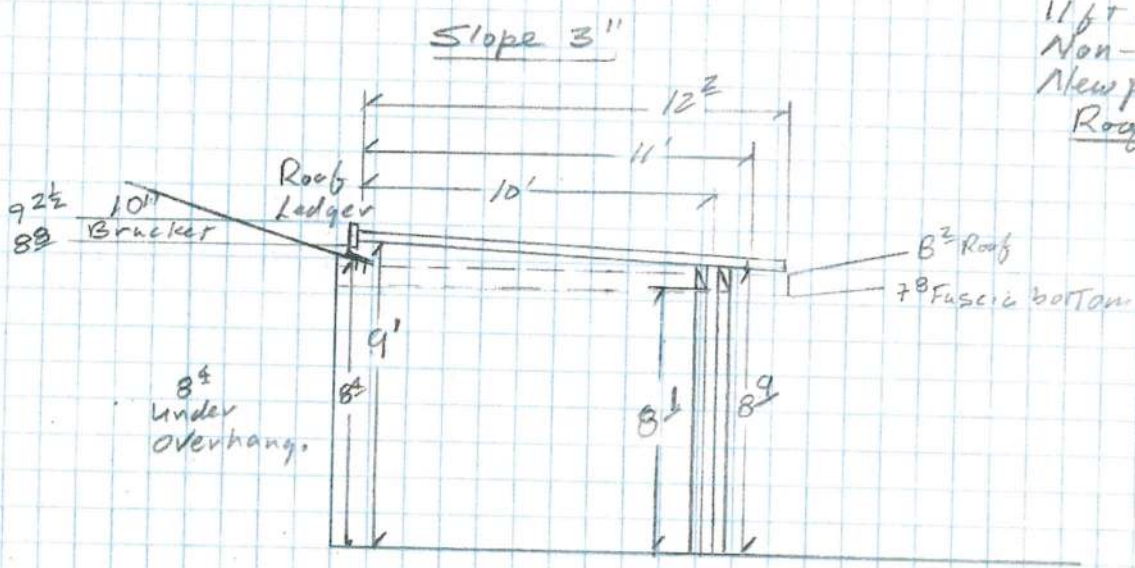
George Morgan- Factory Direct Patio Covers Cell: 714 422-5153

gmorgan44@hotmail.com



ICC ESR 1398 Eng.
Trib 6.0
110mph. Exp. C

Full Wrap + Tails
Gutter + Down Spout Amerimax
11 ft x 20 ft
Non-Insulated
Newport Cover
Roof Mount



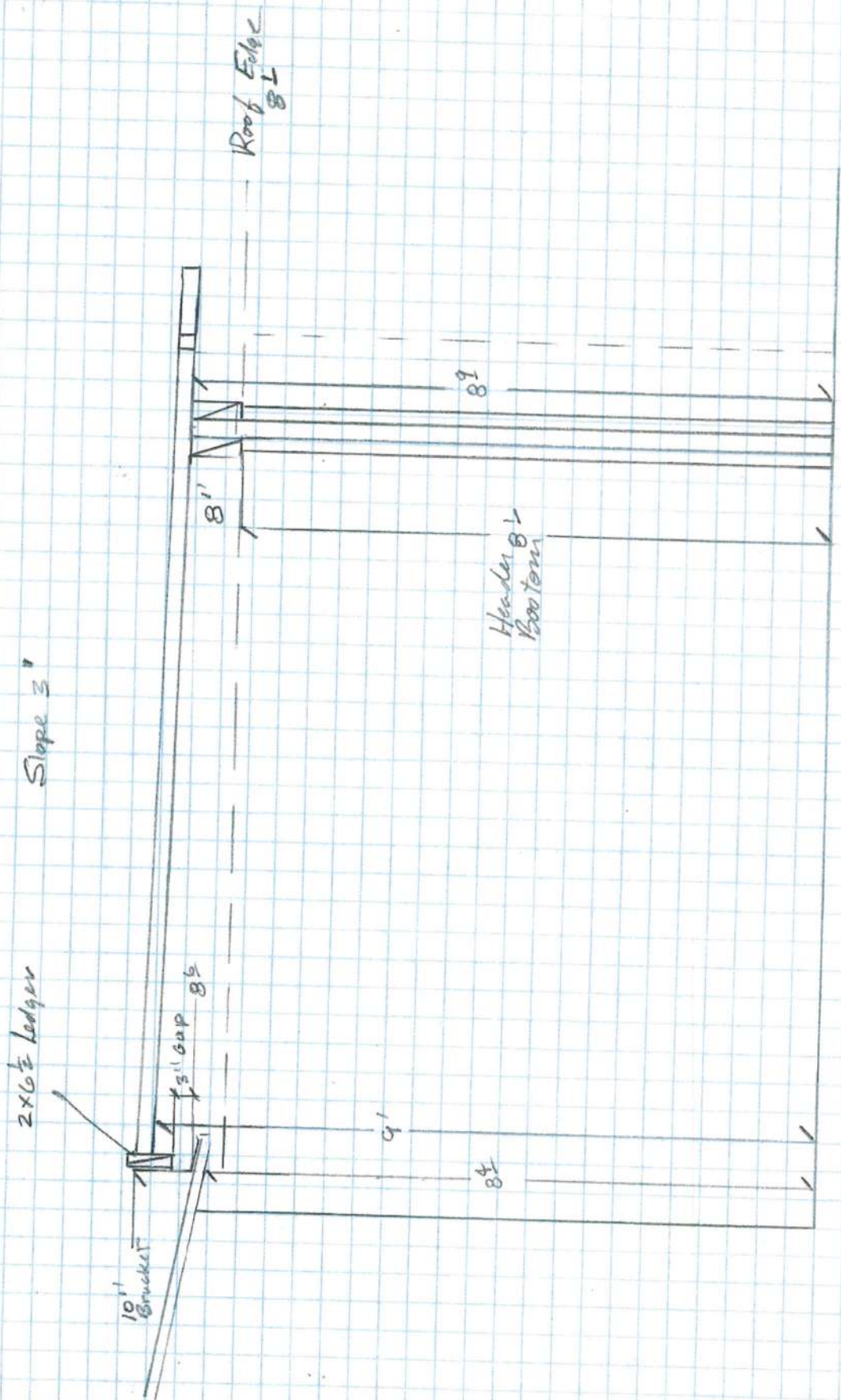
Color: Ceiling, Mohave tan

Other, Adobe

Ends: Corbel

Rev. 1
8-11-19

GM
Fac. Div
3/16



Elevation
For
10\" Brackets.

GM
For. Div
