

January 4, 2020 Rev. 2

Page 1 of 2

To:

E-mail: _____@phia.net

Quote Two Post Roof Mount Newport Cover:

Amerimax, Alumawood, Solid, Non-Insulated Newport Patio ROOF MOUNT Cover 16 ft. proj. (w/Short 3" Ends Only, No Tails) x 13 ft. wide. Double 3x8x13 ft. Headers with Steel Clover inserts in both. Two (2) Steel Clover posts. Posts at approx. 13 1/2 ft. from fascia/hanger on 12 in. roof overhang. Posts at approx. 9 ft. 4in. o.c. Approx. 20/24 in. side and 30 in. front overhangs. Height to hanger on roof ledger approx. 9 ft. 4in. Slope cover 4 in.

Total sq. ft. - 208 = \$2,390.00 Material (HD .032 gauge)

- 700.00 Labor

60.00 Extra 3x3x13 ft. header (Double header)

160.00 (2) Steel 3x3x10 ft. Steel Clover posts

240.00 (2) 3x3x13 ft. Steel Clover header inserts

165.00 2x6x13 ledger w/wood insert

- 50.00 Ledger Labor

-100.00 (5) 10 in. Roof brackets

- 50.00 Roof bracket labor

30.00 2x3x13 Trim to close roof gap

220.00 Fan beam w/(3) wire outs

\$4,165.00 Total (Price valid for 60 days)

*Material: \$ 3,095.00
Labor: \$ 1,020.00
Site Ch. 50.00
1070.00*

*100 m
120 L*

Notes:

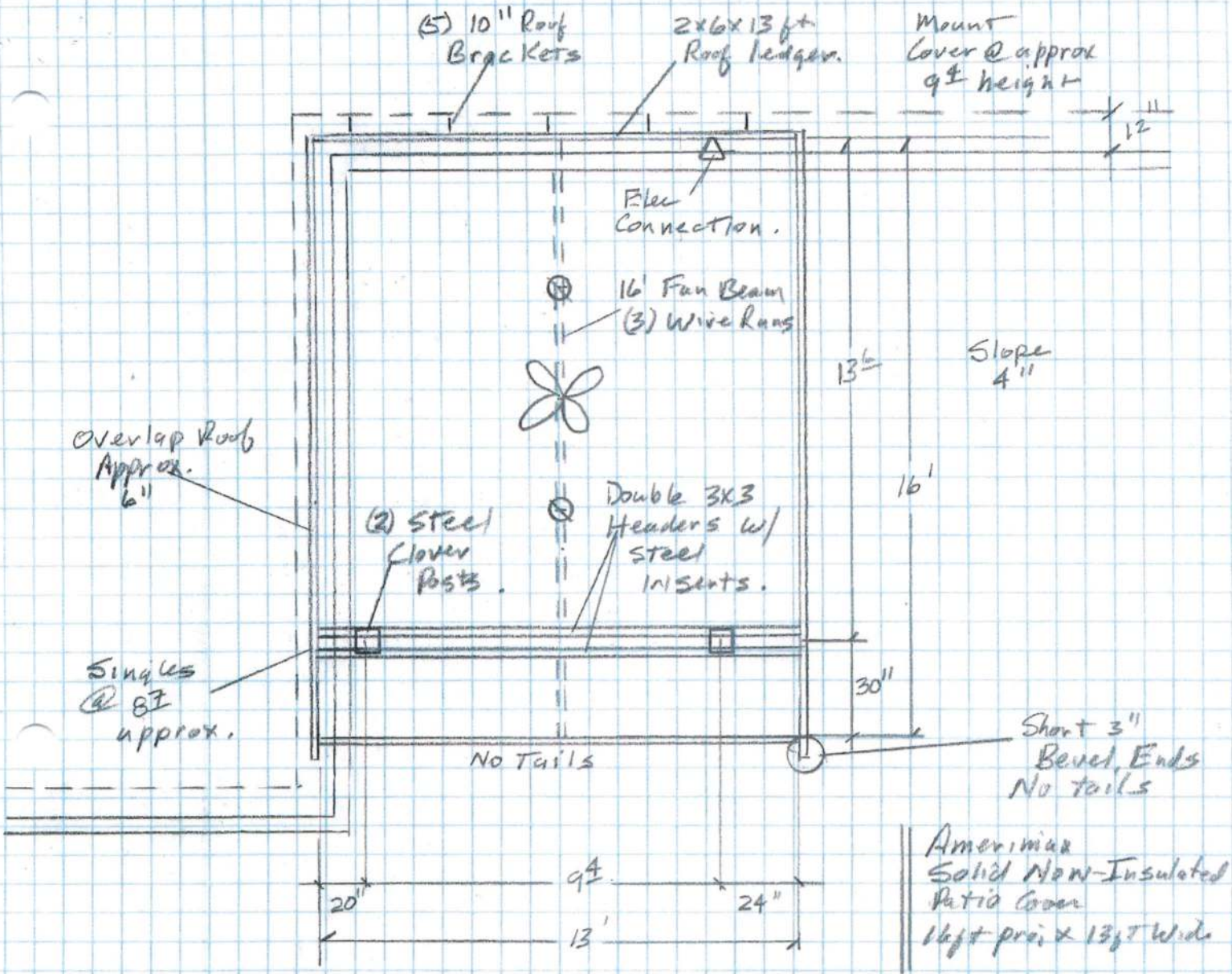
2) ICC ESR1398 Engineering, 110mph wind, Exposure B.

3) Electrical fixtures by customer. Jason to quote on extra labor for house connections.

Warranty - Material - Limited Lifetime from Manufacturer, Amerimax
Labor and Workmanship - 10 years

Color: All Desert Sand

End Design: Bevel



Note. Fan + LED'S by Customer
Fan + lights wired separate.

Draw
LOFZ
1-5-20

GM
Fac. Div
①
4