

Factory Direct Patio Covers Lic. # 883800

Project #9-68

December 3, 2019 Rev. 3

To:

E-mail:

;mail.com

Quote:

Description: Attached, Custom, Amerimax Open Lattice 2x3 Patio Cover 9 ft. proj. x 18 1/2 ft. wide. Two (2) Steel Clover posts on concrete slab with approx. 52/36 in. side and 12 in. front Overhangs. Single 3x8x18 1/2 ft. header w/ 14ga. Steel 'C' insert. Single 2x6x9 ft. rafters at approx. 24 in. o. c. Attach 2x6x18 1/2 Ledger w/ wood insert to stucco wall at approx. 7 ft. 7 in. height. Lattice spacing at 5in o.c. (2 in. between the tubes). Post spacing at approx. 11 ft. o.c.

Total sq. ft. - 167 = \$2,250.00

700.00 Labor

240.00 Steel 'C' insert, 14ga. 20ft. (cut)

50.00 Steel 'C' labor

150.00 (2) 3x3x8ft Steel Clover posts

250.00 2x6x18 1/2 Ledger

50.00 Ledger labor

600.00 Demo and haul old wood cover

\$4,290.00 Total

Mat'l: \$2890.00

Labor + Demo: \$1400.00

Notes:

- 2) No Electrical
- 3) Customer responsible for set-backs

Warranty – Material - Limited Lifetime from Manufacturer, Amerimax
Labor and Workmanship – 10 years

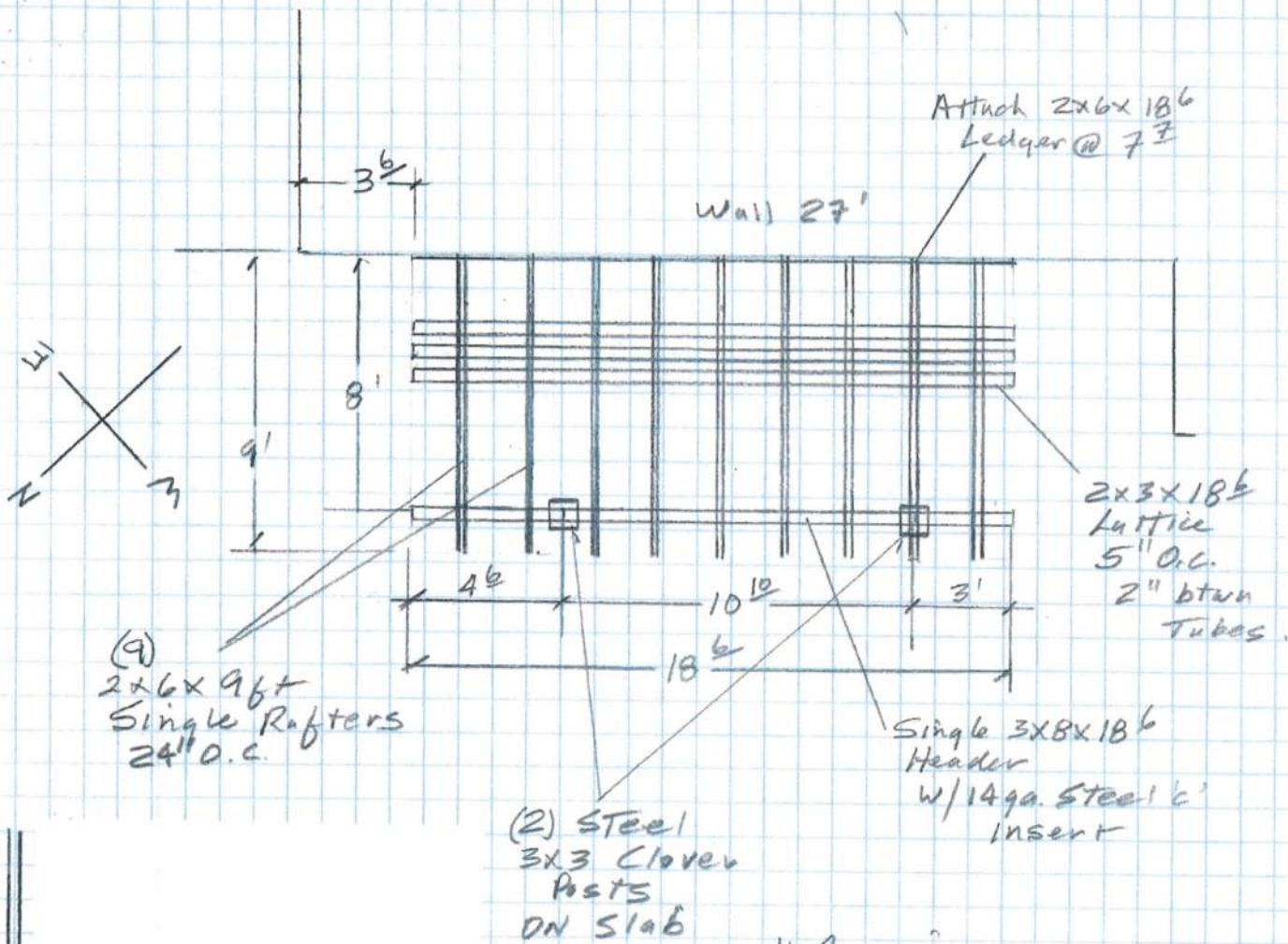
Color: All White

End Design: Bevel

Demo and Haul: December 6, Friday
Install, December 11, Wednesday

Completion: In 1-2 work days

George Morgan- Factory Direct Patio Covers 714 422-5153
gmorgan44@hotmail.com



(9) 2x6x96+
Single Rafters
24" O.C.

(2) Steel
3x3 Clover
Posts
ON Slab

Single 3x8x186
Header
w/ 1/4" ga. Steel Insert

2x3x186
Lattice
5" O.C.
2" diam
Tubes

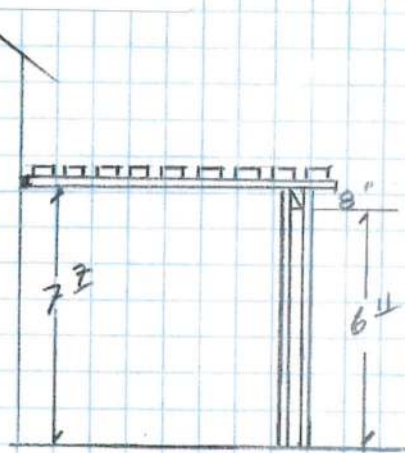
Attach 2x6x186
Ledger @ 7"

Wall 27'

Amerimax
Open Lattice 2x3
Patio Cover
96" proj. x 186" wide

Color: All White

Ends: Bevel



Elevation

JCC ESR 139B
Engineering

110mph,
Exp 2

Note: Demo + Haul old
Wood Cover.

GM
Fac. Div.

3
16