

GENERAL NOTES

1. NOTES ON SHEETS 1.1 & 1.2 SHALL APPLY UNLESS OTHERWISE SHOWN OR NOTED ON PLANS.
2. EQUINOX LOUVERED "PATIO COVERS SHALL BE USED FOR RECREATIONAL OUTDOOR LIVING PURPOSES AND NOT AS CARPORTS, GARAGES, STORAGE ROOMS OR HABITABLE ROOMS" PER 2006 IBC, APPENDIX I.
3. EQUINOX LOUVERED PATIO COVERS SHALL NOT BE ENCLOSED IN ANY WAY WITHOUT ADDITIONAL STRUCTURAL ENGINEERING.
4. DETAILS OF CONSTRUCTION NOT FULLY SHOWN SHALL BE OF THE SAME NATURE AS SHOWN FOR SIMILAR CONDITION.
5. CONSTRUCTION SHALL CONFORM TO ALL APPLICABLE CODES AND REGULATIONS.
6. CONTRACTOR SHALL VERIFY ALL DIMENSIONS, ELEVATIONS, PROPERTY LINES, ETC. ON THE JOB SITE.
7. PATIO COVERS SHALL BE INSTALLED BY EQUINOX MANUFACTURING AND ITS LICENSED DISTRIBUTORS.
8. EQUINOX PATIO COVERS BUILT ACCORDING TO THE DETAILS AND SPECIFICATIONS OF THIS SUBMITTAL PACKAGE ARE NOT DESIGNED FOR SNOW LOADS.
9. WHERE PATIO COVERS ARE TO BE INSTALLED ON AN EXISTING PATIO, SLAB, THE SLAB SHALL BE IN GOOD CONDITION, POSTS SHALL BE LOCATED WHERE SLABS IS FREE OF CRACKS, DETERIORATION, HONEYCOMBING, OR WHERE OTHER POOR WORKMANSHIP EXISTS.
10. DRAINAGE FROM EQUINOX PATIO COVER THAT FLOWS OVER A PUBLIC SIDEWALK BE COLLECTED AND PIPED UNDERNEATH SIDEWALK.
11. IT SHALL BE THE RESPONSIBILITY OF THE CONTRACTOR TO SHORE AND BRACE AS REQUIRED.
12. CONTRACTOR SHALL NOT CONSTRUCT AWMING LARGER THAN 600 SF WITHOUT ADDITIONAL STRUCTURAL ENGINEERING.

FOUNDATION

1. A SOILS REPORT IS NOT NECESSARY FOR THIS PROJECT UNLESS REQUIRED BY 1802.2.1 THROUGH 1802.2.6 OF THE 2006 IBC. SOIL IS ASSUMED TO BE CLASS 5 OF TABLE 1804.2 OF THE 2006 IBC. BEARING 1500 PSF VERT, 100 PSF/FT. HORIZ AND DOUBLED AS PER 1804.3.1. THESE DESIGN VALUES DO NOT APPLY TO MUD ORGANIC SILTS, ORGANIC CLAYS, PEAT OR UNPREPARED FILLS AND MAY REQUIRE FURTHER SOIL INVESTIGATION.
2. ALL FOUNDATIONS ARE SHOWN AND DIMENSIONED AS BEING FORMED.
3. FOUNDATIONS MAY BE PLACED IN NEAT EXCAVATIONS PROVIDED FOOTINGS ARE INCREASED 2" IN WIDTH.
4. EXCAVATIONS SHALL BE CLEANED OF ALL DEBRIS. STANDING WATER SHALL BE REMOVED.
5. ALL FOUNDATIONS SHALL BE PLACED ON 1'-0" COMPACTED ENGINEERED SOIL WITH AT LEAST A 1500 PSF SOIL BEARING CAPACITY (DL + LL).

DESIGN CRITERIA

DESIGN LOADS
 BUILDING CODE: 2006 INTERNATIONAL BUILDING CODE & 2007 CALIFORNIA BUILDING CODE

LIVE LOADS
 PATIO COVER 10.0 PSF, TYP

DEAD LOADS
 PATIO COVER 3.0 PSF (INCLUDES MEMBER SELF WEIGHT)

LATERAL LOADS
 WIND
 WIND SPEED 90 MPH
 EXPOSURE C

SEISMIC
 SEISMIC IMPORTANCE FACTOR: $I_e=1.0$
 MAPPED SPECTRAL RESPONSE ACCELERATIONS: $S_s = 1.50g, S_1 \leq 1.25g$
 SITE CLASS: D, ASSUMED
 SPECTRAL RESPONSE COEFFICIENTS: $SDS=1.00g$
 SEISMIC DESIGN CATEGORY: D
 DESIGN BASE SHEAR: $V = 0.67 \times W$
 SEISMIC RESPONSE COEFFICIENT: $C_s=0.67$
 RESPONSE MODIFICATION FACTOR: $R=1.25$
 ANALYSIS PROCEDURE USED: EQUIVALENT LATERAL FORCE

SAFETY NOTES

1. IT IS THE CONTRACTOR'S RESPONSIBILITY TO COMPLY WITH ALL STATE SAFETY STANDARDS FOR THE STATE IN WHICH THE EQUINOX PATIO COVER IS TO BE BUILT AND OSHA REQUIREMENTS AS THEY APPLY TO THE PROJECT.
2. THE ENGINEER OF RECORD DOES NOT ACCEPT ANY RESPONSIBILITY FOR THE CONTRACTOR'S FAILURE TO COMPLY WITH THESE REQUIREMENTS.
3. THE CONTRACTOR SHALL BE RESPONSIBLE FOR ADEQUATE DESIGN AND CONSTRUCTION OF ALL FORMS AND SHORING REQUIRED.

QA PLAN

SPECIAL INSPECTION REQUIRED IBC 2006 AND CBC 2007 1704.2

STEEL FABRICATORS

IT IS THE CONTRACTOR'S SOLE RESPONSIBILITY TO SEE THAT THE TESTS AND INSPECTIONS ARE PERFORMED. JOB SITE VISITS BY THE ENGINEER OF RECORD DO NOT CONSTITUTE AND ARE NOT A SUBSTITUTE FOR INSPECTIONS.

PROJECT:	EQUINOX PATIO COVERS	REVISION DATE:	1/6/2008
	IAPMO EVALUATION SUBMITTAL		

SHEET DESCRIPTION:
 STRUCTURAL NOTES

EQUINOX MANUFACTURING, LLC 1316 SO 400 E UNIT C1 ST. GEORGE, UTAH 84790	SHEET: 1.1
---	----------------------

EQUINOX MANUFACTURING, LC

LOVERED PATIO COVERS

IAPMO EVALUATION SUBMITTAL

SHEET	TITLE	SHEET	TITLE
	GENERAL		OPTIONS & ELEVATIONS
1.0	COVER SHEET	3.0 - 3.6	OPTIONS & ELEVATIONS
1.1	GENERAL NOTES		
1.2	GENERAL NOTES		
			DETAILS
	PATIO COVER PLANS	4.0 - 4.16	DETAILS
2.0	TYPE 1 LAYOUT		
2.1	TYPE 2 LAYOUT		
2.2	TYPE 3 LAYOUT		
2.3	TYPE 4 LAYOUT		TABLES
2.4	TYPE 5 LAYOUT	5.0	TABLE X
2.5	TYPE 6 LAYOUT	5.1	TABLE X
2.6	TYPE 7 LAYOUT	5.2	TABLE X
2.7	TYPE 8 LAYOUT	5.3	TABLE X
2.8	TYPE 9 LAYOUT		

PROJECT:

EQUINOX PATIO COVERS
IAPMO EVALUATION SUBMITTAL

REVISION DATE:

1/6/2008

SHEET DESCRIPTION:

COVER SHEET

SHEET:

1.0

EQUINOX MANUFACTURING, LLC
1316 SO 400 E UNIT C1
ST. GEORGE, UTAH 84790

CONCRETE NOTES

1. CONCRETE CONSTRUCTION SHALL CONFORM TO ACI 318-05
2. THE MINIMUM 28 DAY STRENGTH AND TYPE OF CONCRETE SHALL BE AS FOLLOW:
FOUNDATIONS (W/C RATIO=0.45).....4500 psl (150 pcf)
3. CEMENT SHALL CONFORM TO ASTM C-150, TYPE V.
4. CONCRETE AGGREGATES:
NATURAL SAND AND ROCK AGGREGATES SHALL CONFORM TO ASTM-C-33 (3/4" MAX)
5. REINFORCING SHALL CONFORM TO ASTM A615 -- GRADE 60 UNO,
WELDING OF REINFORCING STEEL SHALL CONFORM TO AWS D1.4 USING PROPER
LOW HYDROGEN ELECTRODES. TACK WELDING TO REBAR IS STRICTLY
PROHIBITED.
7. DIMENSIONS SHOWN FOR LOCATION OF REINFORCING ARE TO THE FACE OF MAIN
BARS AND DENOTE CLEAR COVERAGE. CONCRETE COVERAGE SHALL BE AS
FOLLOWS, UNO ON DRAWINGS:
CONCRETE DEPOSITED DIRECTLY
AGAINST GROUND (EXCEPT SLABS).....3"
CONCRETE EXPOSED TO GROUND
BUT PLACED IN FORMS.....2"
SLABS (ON GROUND)..... POSITION IN CENTER OF SLAB
8. REMOVE ALL DEBRIS FROM THE FORMS BEFORE PLACING ANY CONCRETE.
REINFORCING, DOWELS, BOLTS, ANCHORS, SLEEVES, ETC. TO BE EMBEDDED IN
CONCRETE SHALL BE SECURELY POSITIONED BEFORE PLACING CONCRETE.
OBTAIN APPROVAL OF ALL AFFECTED TRADES PRIOR TO PLACING CONCRETE (WET SETTING IS PROHIBITED).
10. MAXIMUM FREE FALL OF CONCRETE SHALL BE 4'-0".
11. NO WOOD SPREADERS ALLOWED. NO WOOD STAKES ALLOWED IN AREAS TO BE
CONCRETED.
12. CONCRETE MIX DESIGN SHALL BE PREPARED BY AN INDEPENDENT LABORATORY
APPROVED BY THE ENGINEER OF RECORD.
13. COMMERCIAL GRADE "QUICKRETE 5000" PRE-MANUFACTURED CONCRETE IS AN
ACCEPTABLE SUBSTITUTE FOR THE ABOVE REFERENCED CONCRETE
REQUIREMENTS. FOLLOW ALL MANUFACTURER'S RECOMMENDATIONS FOR
PORTIONING, MIXING, AND INSTALLATION.

STRUCTURAL STEEL

1. FABRICATION, ERECTION AND MATERIALS SHALL CONFORM WITH THE AISC
SPECIFICATION FOR THE DESIGN FABRICATION AND ERECTION OF STRUCTURAL
STEEL FOR BUILDINGS AND THE IBC.
2. STRUCTURAL STEEL SHAPES SHALL CONFORM TO THE FOLLOWING:
PLATES & BARS & MISCELLANEOUS SHAPES.....ASTM A36
3. WELDING DONE BY THE ELECTRIC ARC PROCESS IN ACCORDANCE WITH "AWS"
STANDARDS; USE ONLY CERTIFIED WELDERS. ALL BUTT WELDS SHALL HAVE
COMPLETE PENETRATION. ALL EXPOSED BUTT WELDS SHALL BE GROUND.
4. ALL STRUCTURAL STEEL SHALL BE ERECTED PLUMB AND TRUE TO LINE.

STRUCTURAL ALUMINIUM

1. FABRICATION, ERECTION AND MATERIALS SHALL CONFORM WITH THE 2000
ALUMINIUM DESIGN MANUAL, 2007 CBC, AND AA ASM35.
2. STRUCTURAL ALUMINIUM SHAPES SHALL CONFORM TO THE FOLLOWING ALLOYS
AND TEMPER:
TUBE SHAPES (UNO).....6061-T6
3. ALL STRUCTURAL ALUMINIUM SHALL BE ERECTED PLUMB AND TRUE TO LINE.
TEMPORARY BRACING SHALL BE INSTALLED AND SHALL BE LEFT IN PLACE UNTIL
OTHER MEANS ARE PROVIDED TO ADEQUATELY BRACE THE STRUCTURE.
4. HOLES FOR UNFINISHED BOLTS OR RIVETS SHALL BE OF THE SAME NOMINAL
DIAMETER AS THE BOLT OR RIVET PLUS 1/16".
5. USE STANDARD AISC GAGE AND PITCH FOR BOLTS EXCEPT AS OTHERWISE NOTED.
6. ALL FASTENERS TO BE STANDARD GRADE GALVANIZED TEK SCREWS UNLESS
OTHERWISE NOTED.
7. THE CONTRACTOR SHALL COMPLY WITH SECTION 6.6.1 OF THE 2000 ALUMINIUM
DESIGN MANUAL 1A WHERE ALUMINIUM IS IN CONTACT WITH DISSIMILAR
MATERIALS.

PROJECT:

EQUINOX PATIO COVERS
IAPMO EVALUATION SUBMITTAL

REVISION DATE:

1/6/2008

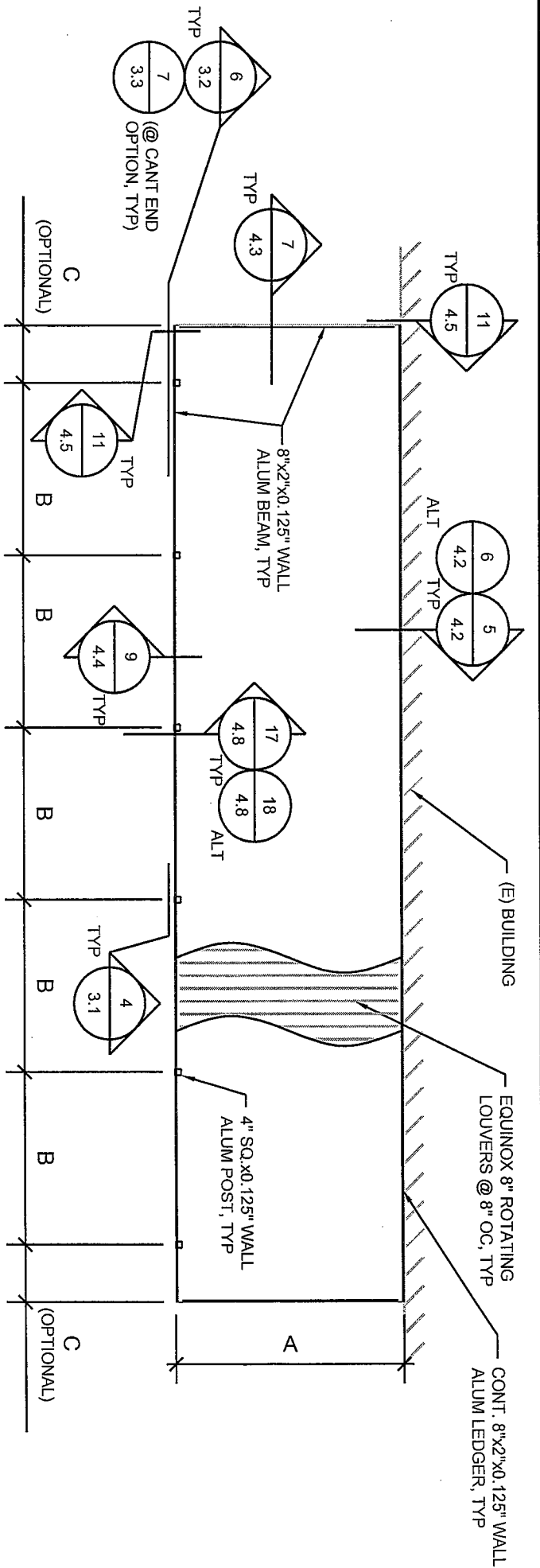
SHEET DESCRIPTION:

STRUCTURAL NOTES

SHEET:

EQUINOX MANUFACTURING, LLC
1316 SO 400 E UNIT C1
ST. GEORGE, UTAH 84790

1.2



TYPE 1 LAYOUT

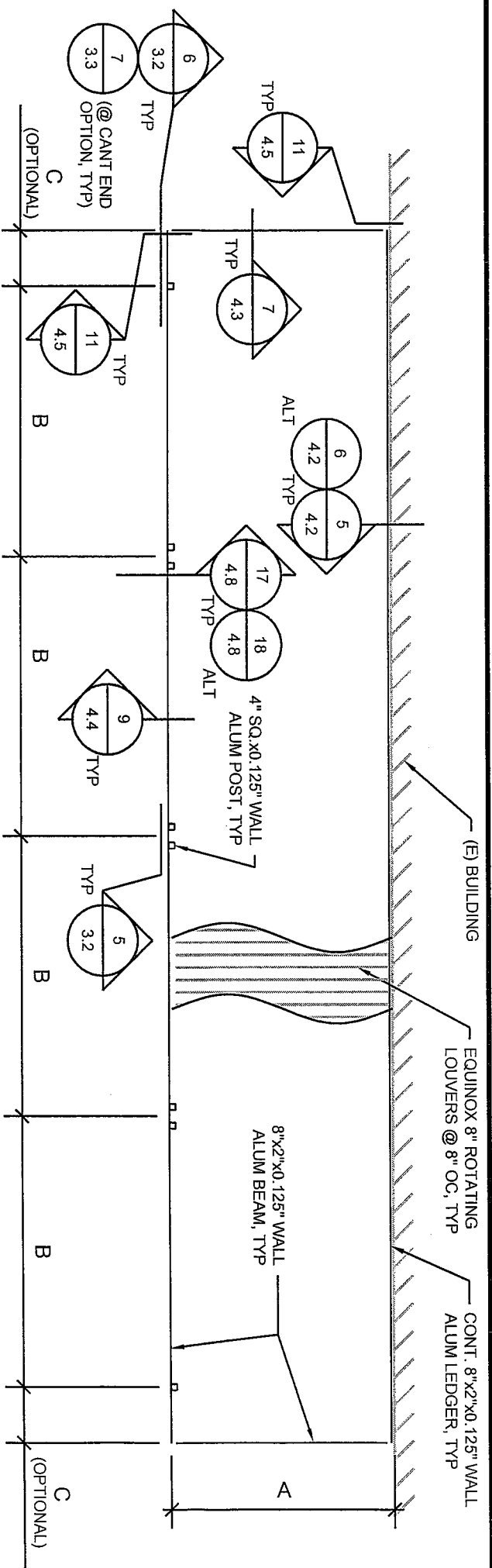
SCALE: 1/8" = 1'-0"

TYPE 1 DESIGN TABLE_{1,2}

1 BAY				2 TO 6 BAY			
A (FT)	B MAX (FT)	C (FT)	A (FT)	B MAX (FT)	C (FT)	A (FT)	B MAX (FT)
6	18	0	6	18	0	12	18
8	18	0	8	13	0	10	13
10	18	0	10	11	0	8	11
12	18	0	12	9	0	6	9
6	18	3	6	18	3	12	18
8	18	3	8	13	3	10	13
10	18	3	10	11	3	8	11
12	18	3	12	9	3	6	9

1. CONTRACTOR MAY VARY BAY WIDTHS (B) BUT MAY NOT EXCEED WIDTHS IN TABLES.
 2. CONTRACTOR BAY VARY CANTILEVER WIDTHS (C) BUT MAY NOT EXCEED WIDTHS IN TABLES.

PROJECT: EQUINOX PATIO COVERS LAPMO EVALUATION SUBMITTAL	REVISION DATE: 1/6/2008	EQUINOX MANUFACTURING, LLC 1316 SO 400 E UNIT C1 ST. GEORGE, UTAH 84790
SHEET DESCRIPTION: TYPE 1 LAYOUT		2.0



SCALE: 1/8" = 1'-0"

TYPE 2 LAYOUT

TYPE 2 DESIGN TABLE^{1,2}

2 BAY TO 4 BAY		
A (FT)	B MAX (FT)	C (FT)
6	22	0
8	22	0
10	21	0
12	17	0
6	22	3
8	22	3
10	21	3
12	17	3

1 CONTRACTOR MAY VARY BAY WIDTHS (B) BUT MAY NOT EXCEED WIDTHS IN TABLES.
 2 CONTRACTOR BAY VARY CANTILEVER WIDTHS (C) BUT MAY NOT EXCEED WIDTHS IN TABLES.

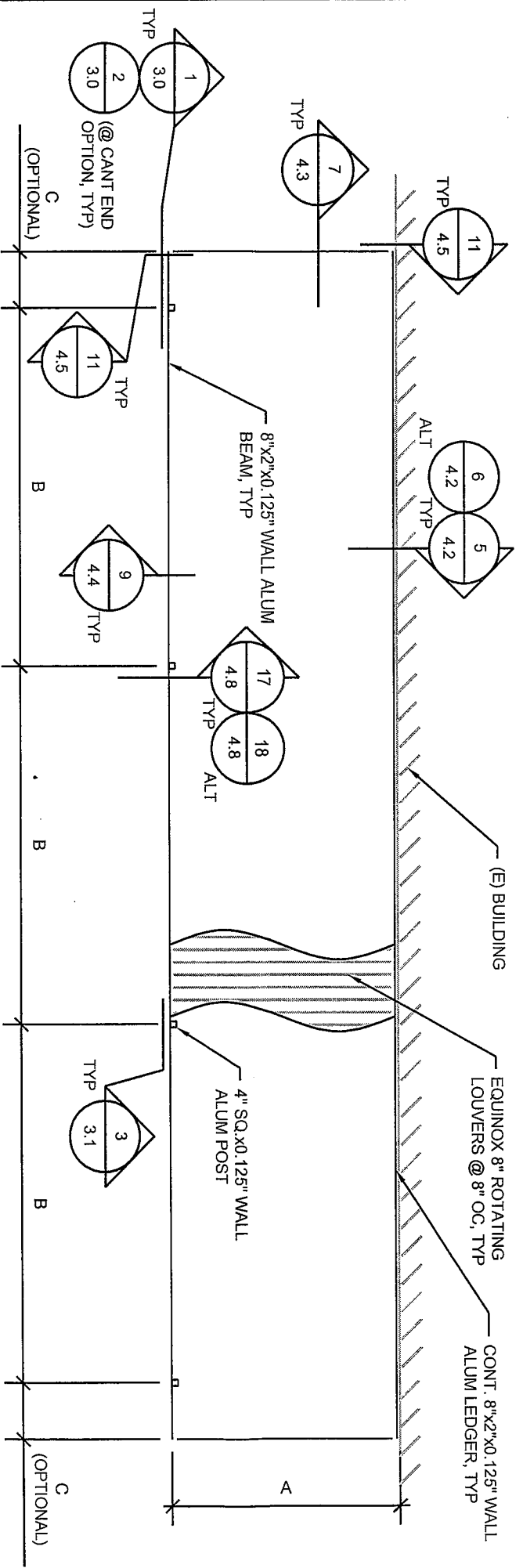
PROJECT: EQUINOX PATIO COVERS
 IAPMO EVALUATION SUBMITTAL

REVISION DATE: 1/6/2008

EQUINOX MANUFACTURING, LLC
 1316 SO 400 E UNIT C1
 ST. GEORGE, UTAH 84790

SHEET: 2.1

SHEET DESCRIPTION: TYPE 2 LAYOUT



TYPE 3 LAYOUT

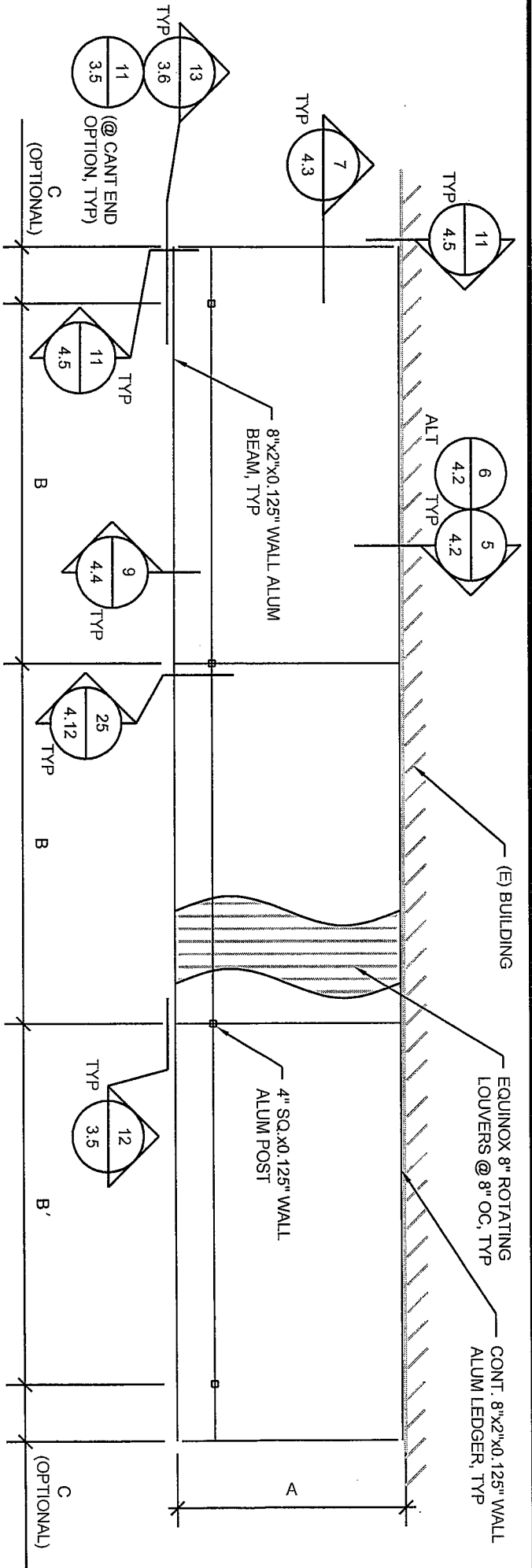
SCALE: 1/8" = 1'-0"

TYPE 3 DESIGN TABLE_{1,2}

1 TO 6 BAY		
A (FT)	B MAX (FT)	C (FT)
6	20	0
8	20	0
10	20	0
12	20	0
6	20	3
8	20	3
10	20	3
12	20	3

1. CONTRACTOR MAY VARY BAY WIDTHS (B) BUT MAY NOT EXCEED WIDTHS IN TABLES.
 2. CONTRACTOR BAY VARY CANTILEVER WIDTHS (C) BUT MAY NOT EXCEED WIDTHS IN TABLES.

PROJECT: EQUINOX PATIO COVERS IAPMO EVALUATION SUBMITTAL	REVISION DATE: 1/6/2008	EQUINOX MANUFACTURING, LLC 1316 SO 400 E UNIT C1 ST. GEORGE, UTAH 84790
SHEET DESCRIPTION: TYPE 3 LAYOUT		SHEET: <h1 style="font-size: 48px; margin: 0;">2.2</h1>



TYPE 5 LAYOUT

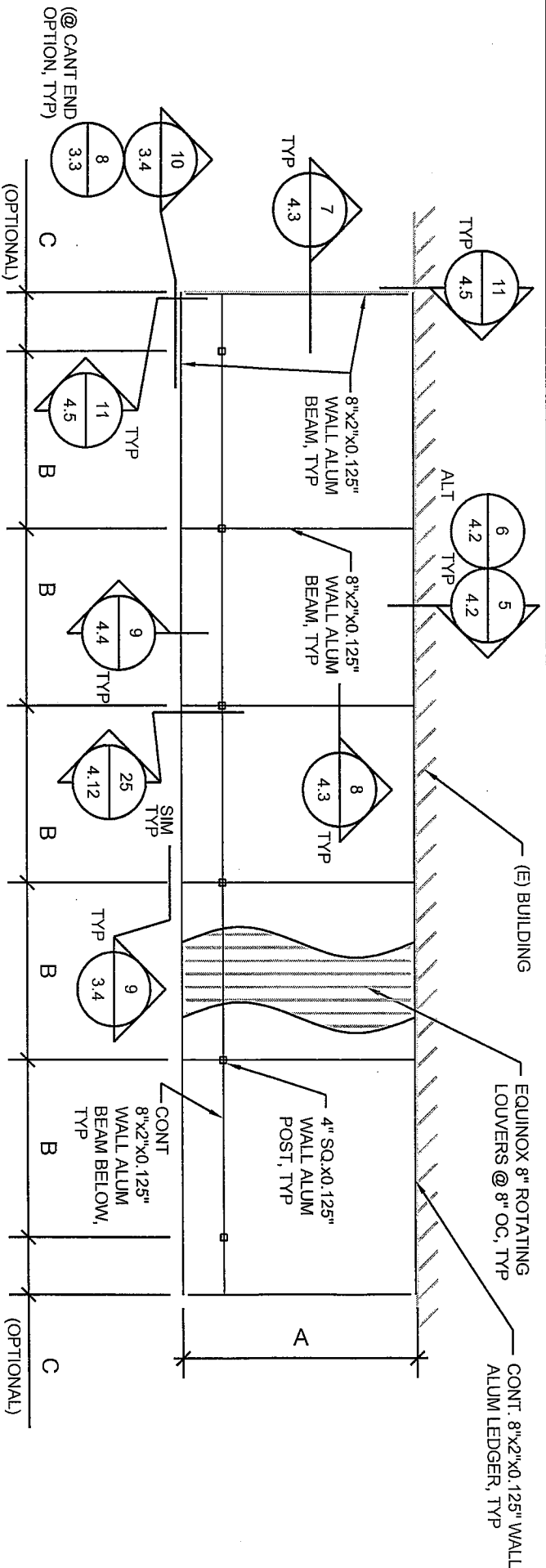
SCALE: 1/8" = 1'-0"

TYPE 3 DESIGN TABLE_{1,2}
1 TO 6 BAY

A (FT)	B MAX (FT)	C (FT)
6	20	0
8	20	0
10	20	0
12	20	0
6	20	3
8	20	3
10	20	3
12	20	3

1. CONTRACTOR MAY VARY BAY WIDTHS (B) BUT MAY NOT EXCEED WIDTHS IN TABLES.
 2. CONTRACTOR BAY VARY CANTILEVER WIDTHS (C) BUT MAY NOT EXCEED WIDTHS IN TABLES.

PROJECT: EQUINOX PATIO COVERS IAPMO EVALUATION SUBMITTAL	REVISION DATE: 1/6/2008	EQUINOX MANUFACTURING, LLC 1316 SO 400 E UNIT C1 ST. GEORGE, UTAH 84790	SHEET: <h1 style="font-size: 48px; margin: 0;">2.4</h1>
SHEET DESCRIPTION: TYPE 5 LAYOUT			



TYPE 4 LAYOUT

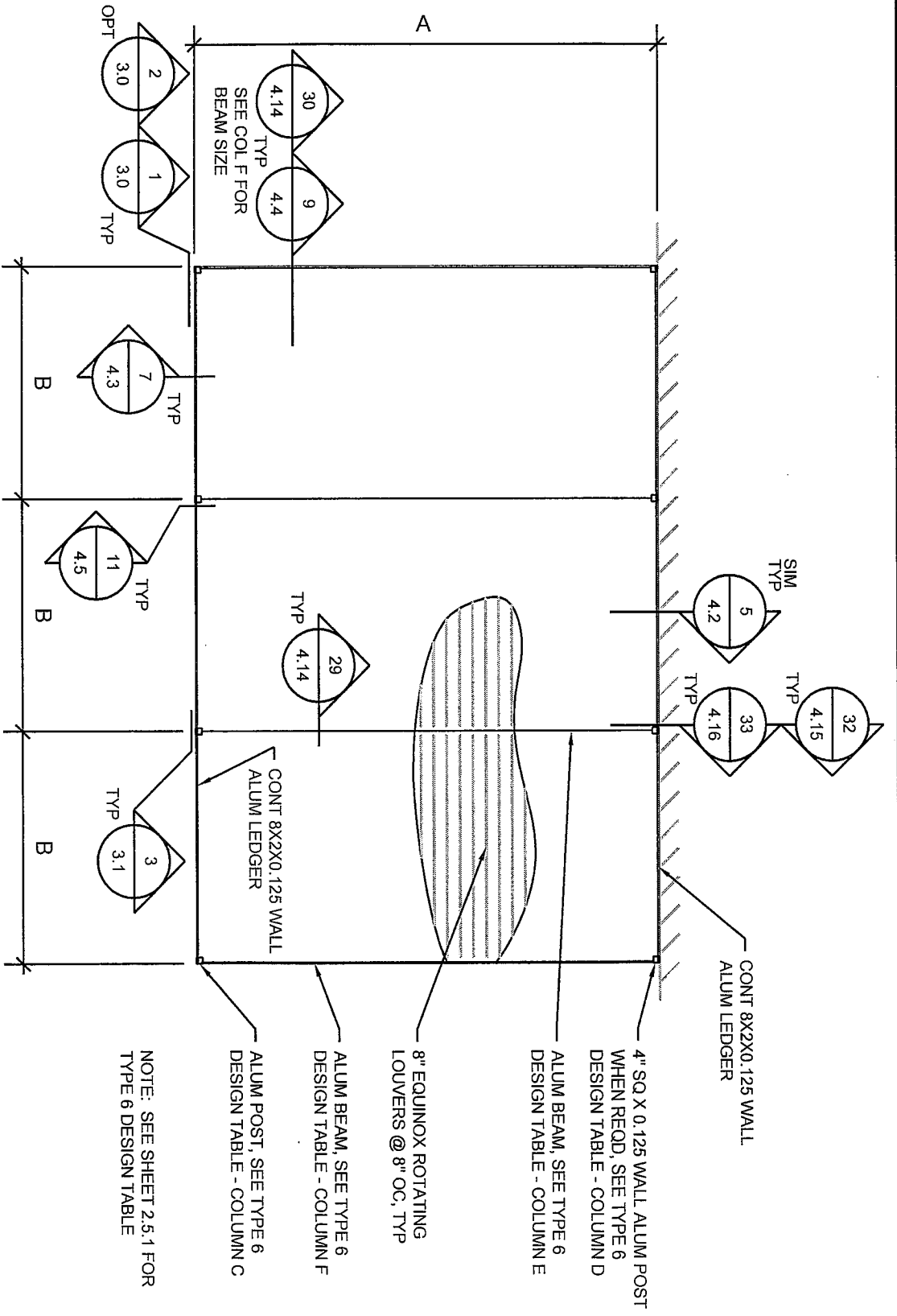
SCALE: 1/8" = 1'-0"

TYPE 1 DESIGN TABLE_{1,2}

A (FT)	1 BAY			2 TO 6 BAY		
	B MAX (FT)	C (FT)	A (FT)	B MAX (FT)	C (FT)	
6	18	0	6	18	0	
8	18	0	8	13	0	
10	18	0	10	11	0	
12	18	0	12	9	0	
6	18	3	6	18	3	
8	18	3	8	13	3	
10	16	3	10	11	3	
12	12	3	12	9	3	

1. CONTRACTOR MAY VARY BAY WIDTHS (B) BUT MAY NOT EXCEED WIDTHS IN TABLES.
 2. CONTRACTOR BAY VARY CANTILEVER WIDTHS (C) BUT MAY NOT EXCEED WIDTHS IN TABLES.

PROJECT: EQUINOX PATIO COVERS IAPMO EVALUATION SUBMITTAL SHEET DESCRIPTION: TYPE 4 LAYOUT	REVISION DATE: 1/6/2008	EQUINOX MANUFACTURING, LLC 1316 SO 400 E UNIT C1 ST. GEORGE, UTAH 84790
SHEET:		2.3

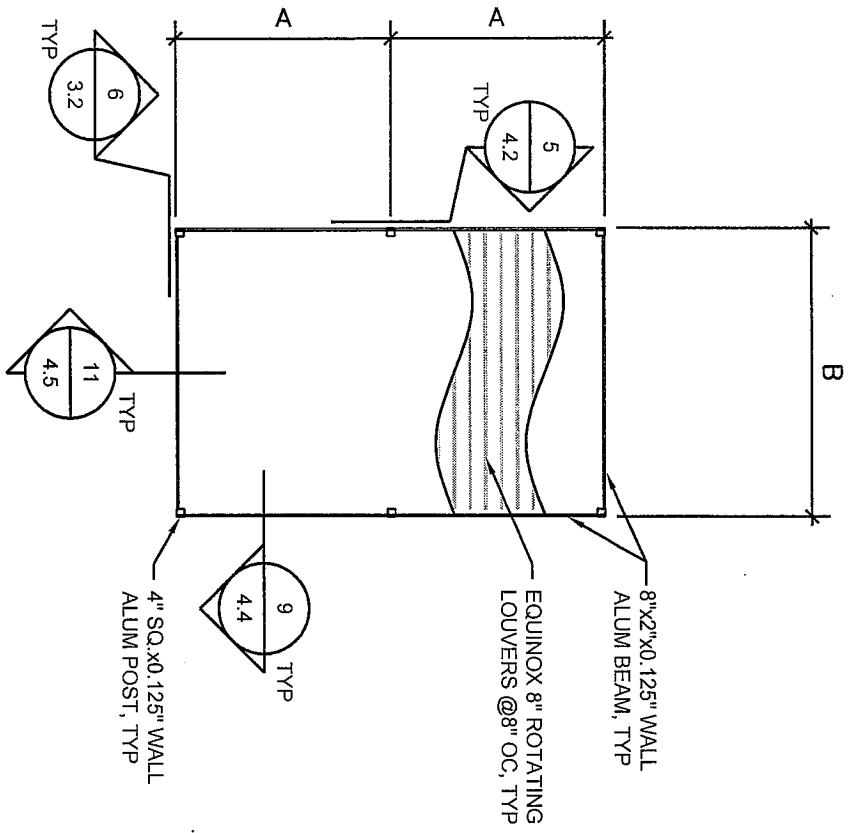


TYPE 6 LAYOUT

SCALE: 1/8" = 1'-0"

NOTE: SEE SHEET 2.5.1 FOR TYPE 6 DESIGN TABLE

PROJECT: EQUINOX PATIO COVERS IAPMO EVALUATION SUBMITTAL		REVISION DATE: 1/6/2008	EQUINOX MANUFACTURING, LLC 1316 SO 400 E UNIT C1 ST. GEORGE, UTAH 84790	SHEET: 2.5
SHEET DESCRIPTION: TYPE 6 LAYOUT				



TYPE 8 LAYOUT

SCALE: 1/8" = 1'-0"

PROJECT: EQUINOX PATIO COVERS
 IAPMO EVALUATION SUBMITTAL

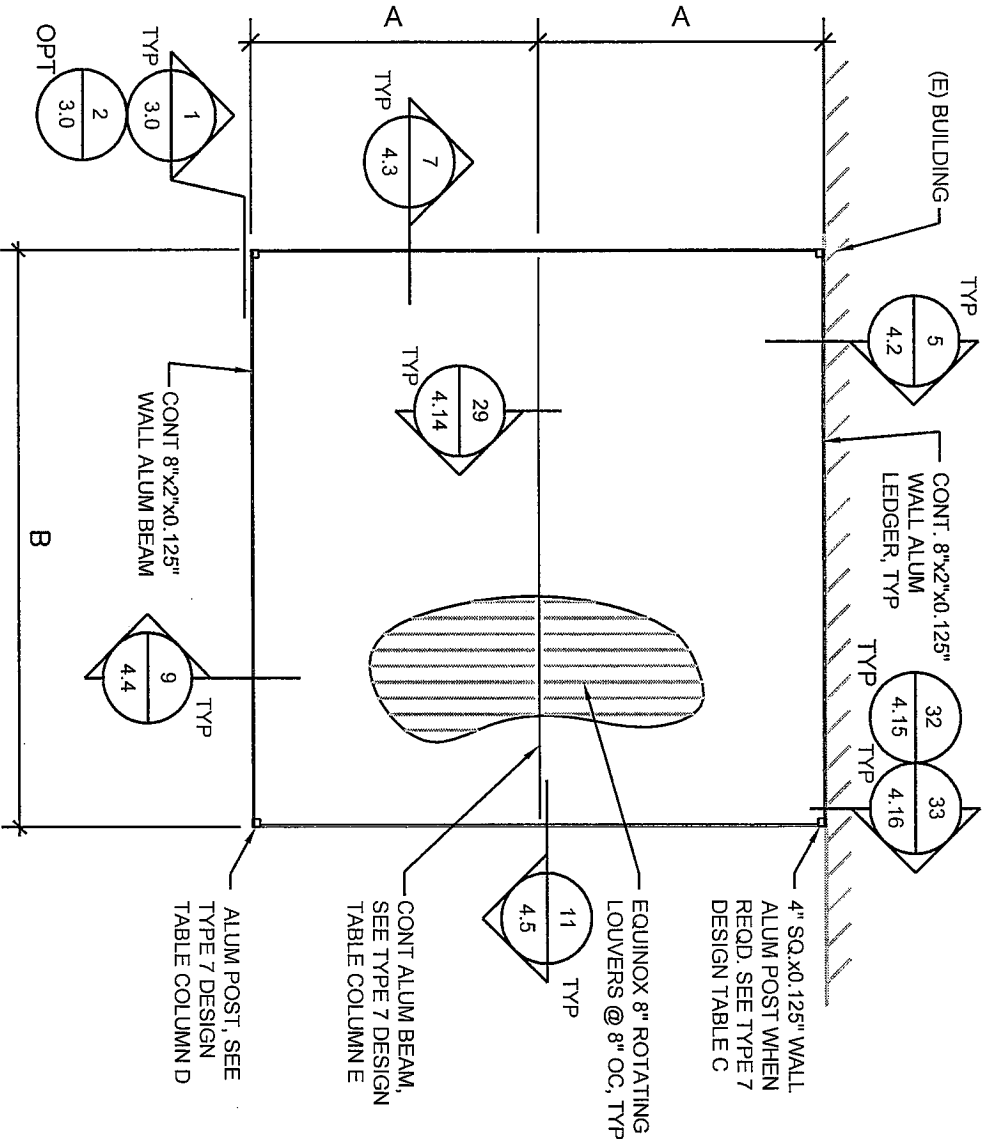
REVISION DATE:
 1/6/2008

SHEET DESCRIPTION:
 TYPE 8 LAYOUT

EQUINOX MANUFACTURING, LLC
 1316 SO 400 E UNIT C1
 ST. GEORGE, UTAH 84790

SHEET:

2.7



TYPE 7 LAYOUT

SCALE: 1/8" = 1'-0"

PROJECT: EQUINOX PATIO COVERS
IAPMO EVALUATION SUBMITTAL

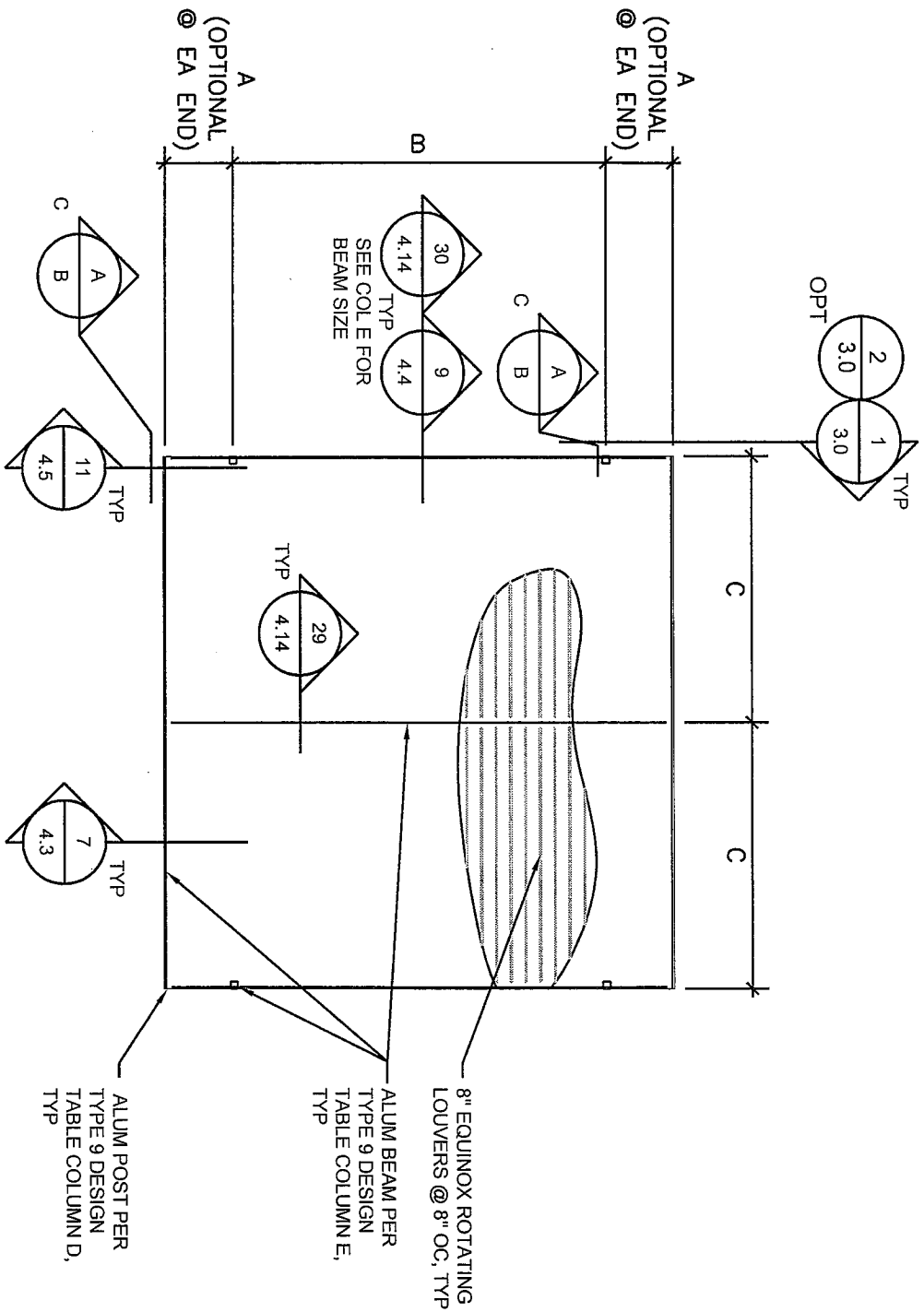
REVISION DATE:
1/6/2008

EQUINOX MANUFACTURING, LLC
1316 SO 400 E UNIT C1
ST. GEORGE, UTAH 84790

SHEET:

SHEET DESCRIPTION:
TYPE 7 LAYOUT

2.6



TYPE 9 LAYOUT

SCALE: 1/8" = 1'-0"

NOTE: SEE SHEET 2.8.1 FOR TYPE 9 DESIGN TABLE

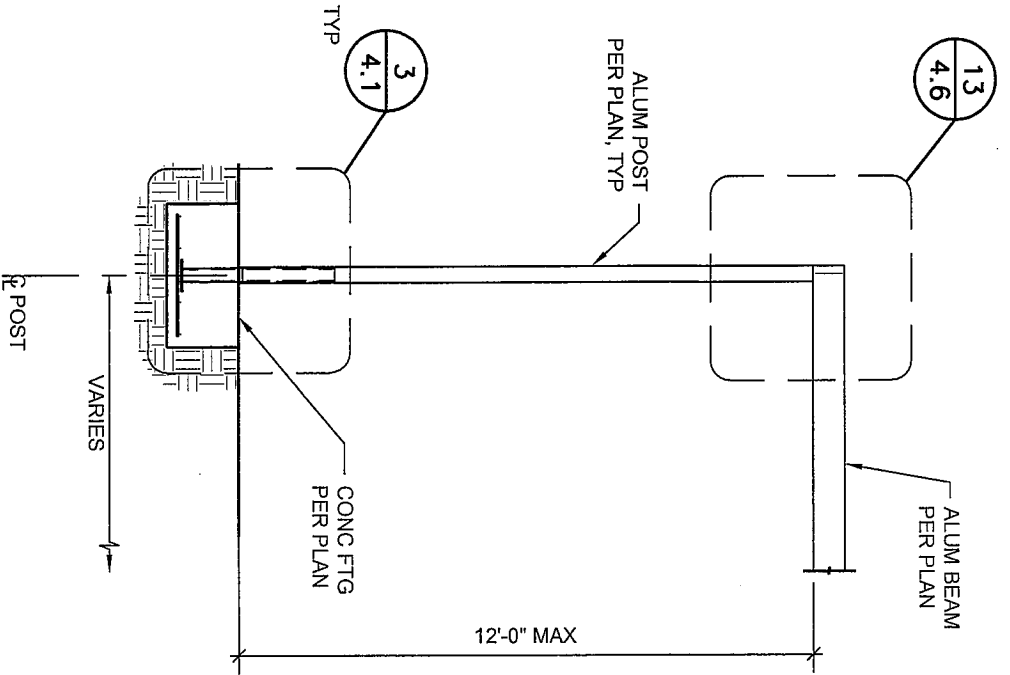
PROJECT: EQUINOX PATIO COVERS
 IAPMO EVALUATION SUBMITTAL

REVISION DATE: 1/6/2008

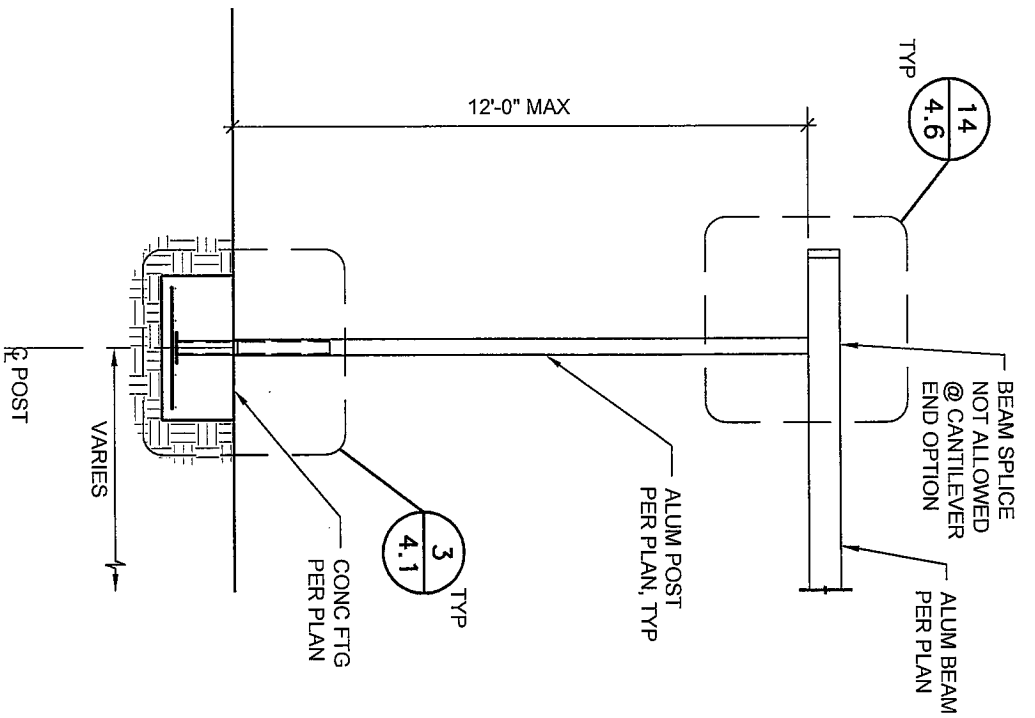
EQUINOX MANUFACTURING, LLC
 1316 SO 400 E UNIT C1
 ST. GEORGE, UTAH 84790

SHEET:

2.8



1 DETAIL
SCALE: 1/4" = 1'-0"



2 DETAIL
SCALE: 1/4" = 1'-0"

PROJECT: EQUINOX PATIO COVERS
IAPMO EVALUATION SUBMITTAL

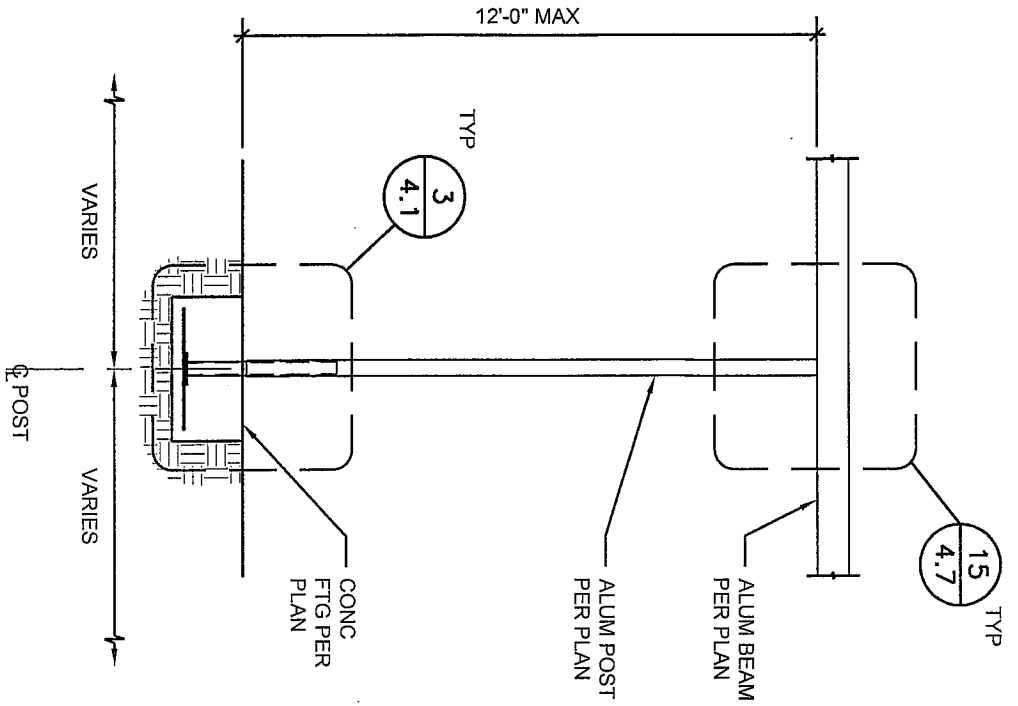
REVISION DATE: 1/6/2008

SHEET DESCRIPTION: ELEVATIONS

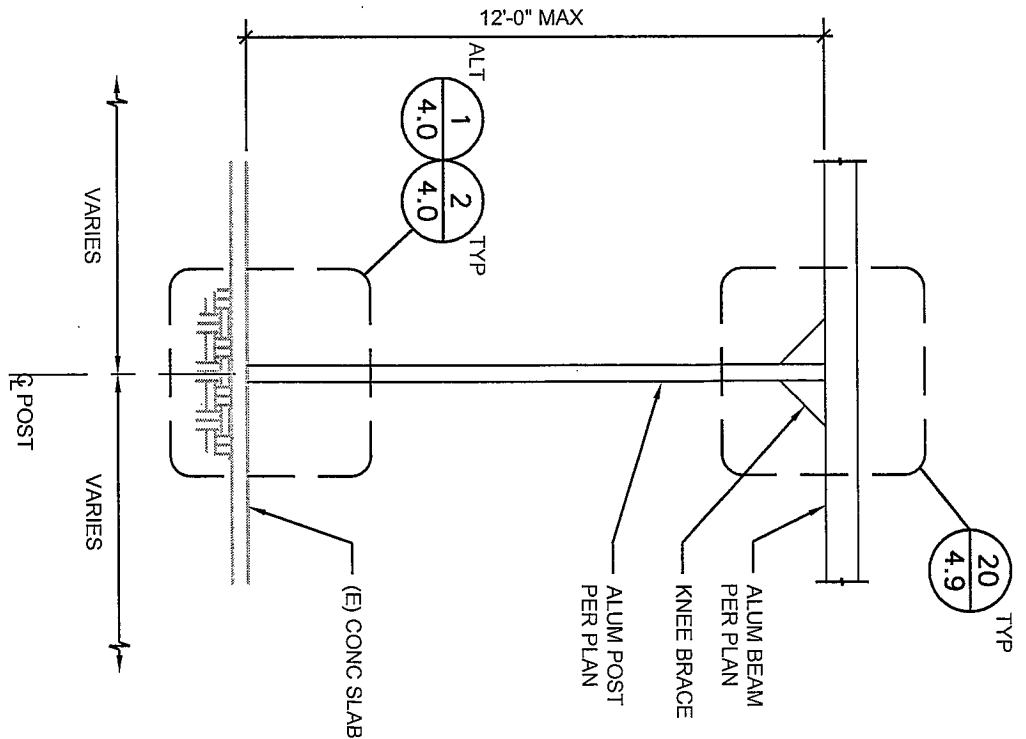
EQUINOX MANUFACTURING, LLC
1316 SO 400 E UNIT C-1
ST. GEORGE, UTAH 84790

SHEET:

3.0



3 DETAIL
SCALE: 1/4" = 1'-0"



4 DETAIL
SCALE: 1/4" = 1'-0"

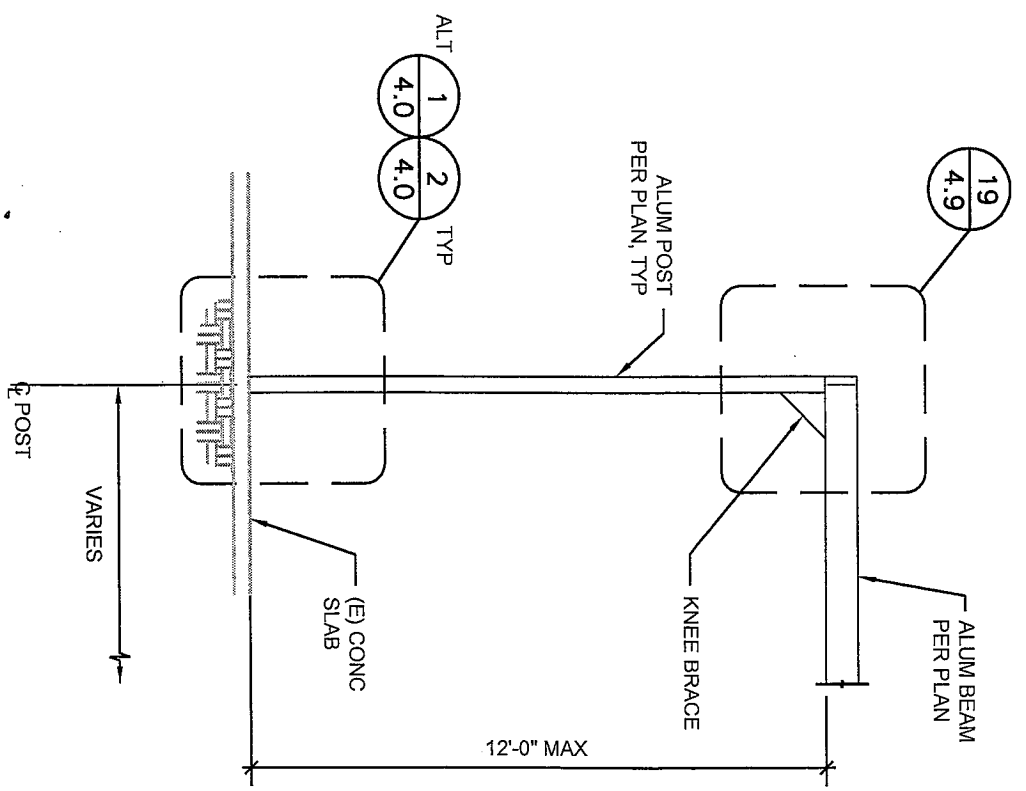
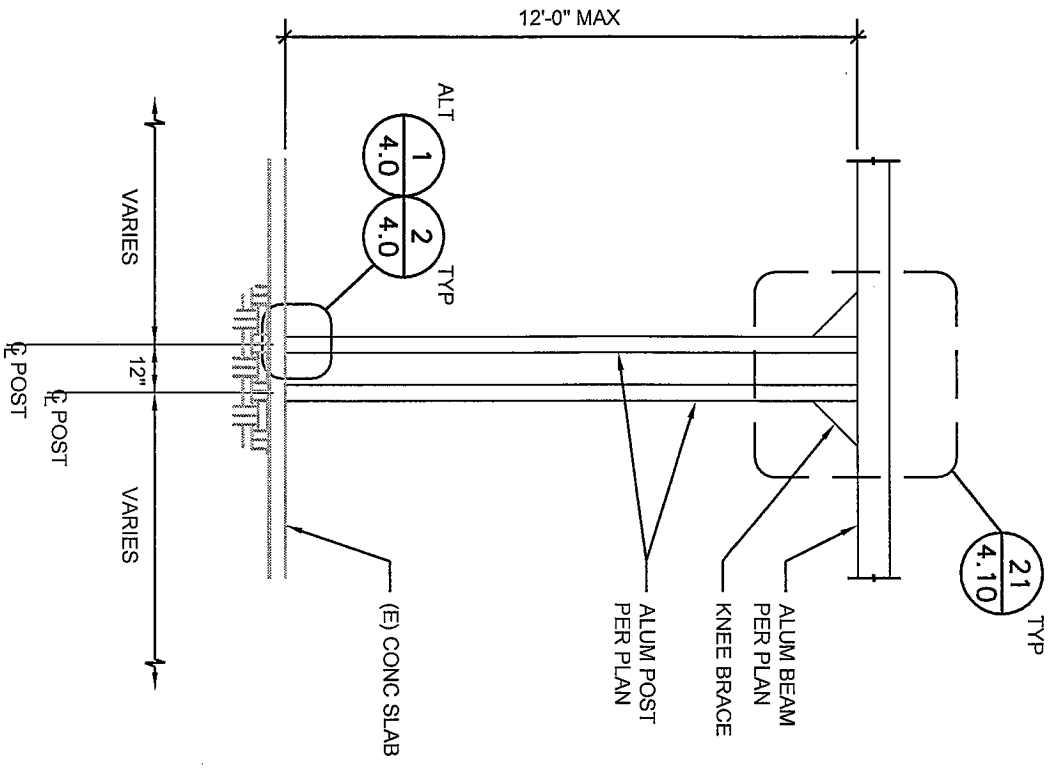
PROJECT: EQUINOX PATIO COVERS
IAPMO EVALUATION SUBMITTAL

REVISION DATE:
1/6/2008

EQUINOX MANUFACTURING, LLC
1316 SO 400 E UNIT C1
ST. GEORGE, UTAH 84790

SHEET:

3.1



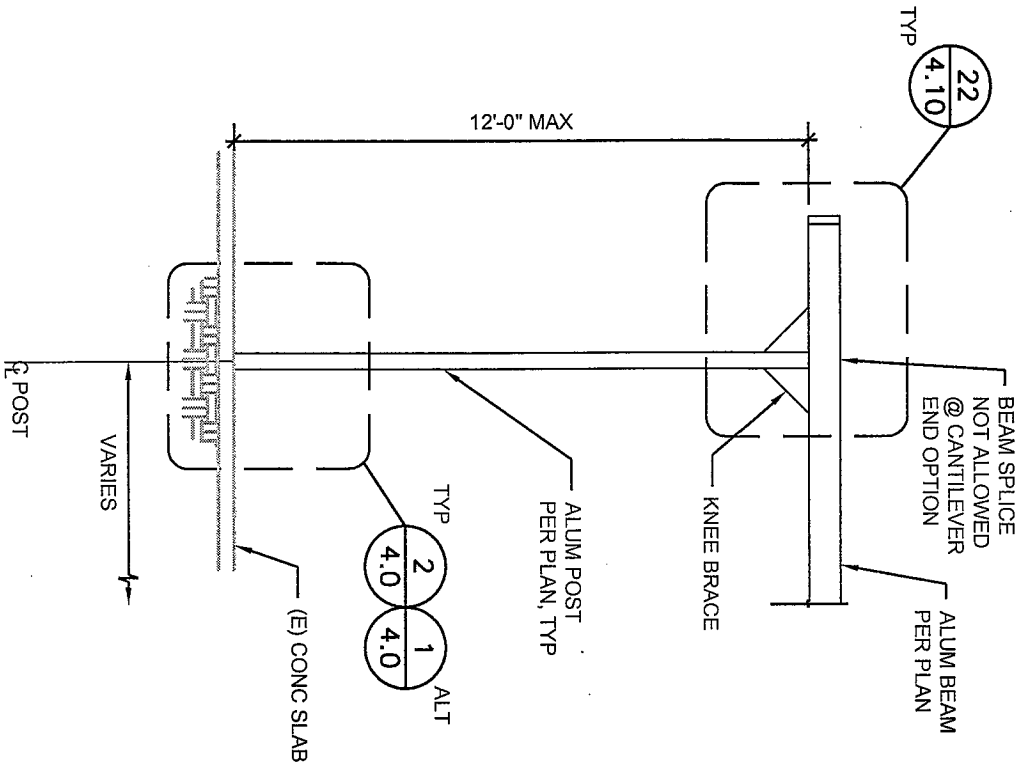
PROJECT: EQUINOX PATIO COVERS
IAPMO EVALUATION SUBMITTAL

REVISION DATE:
1/6/2008

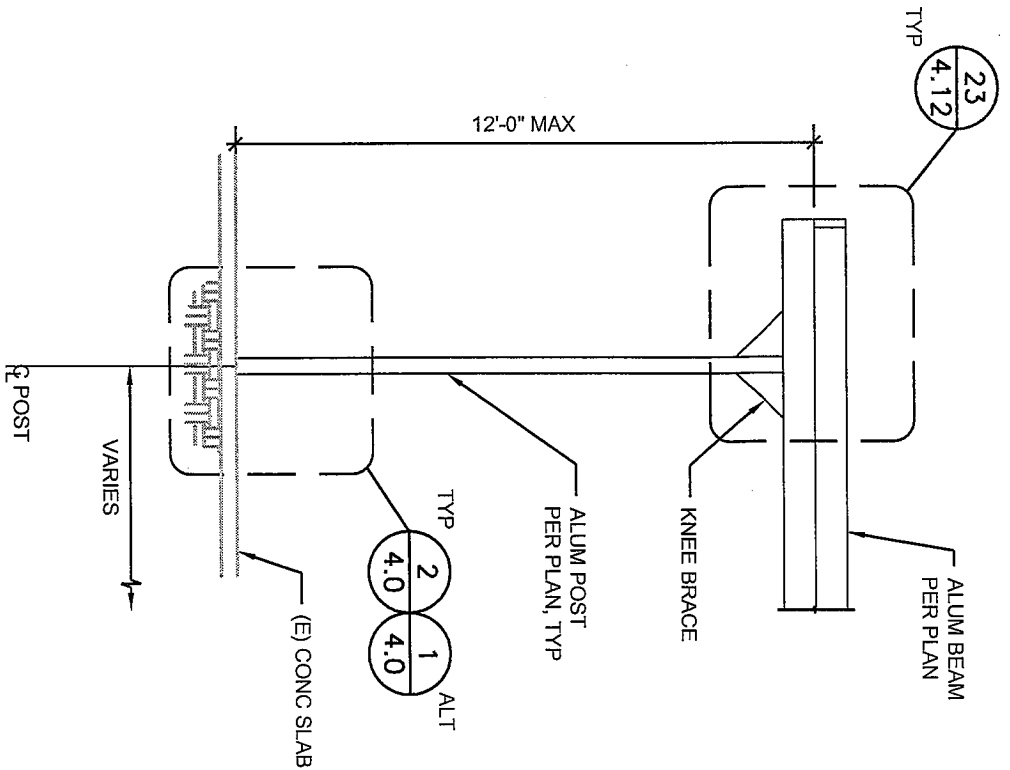
EQUINOX MANUFACTURING, LLC
1316 SO 400 E UNIT C1
ST. GEORGE, UTAH 84790

SHEET:

3.2



7 DETAIL
SCALE: 1/4" = 1'-0"



8 DETAIL
SCALE: 1/4" = 1'-0"

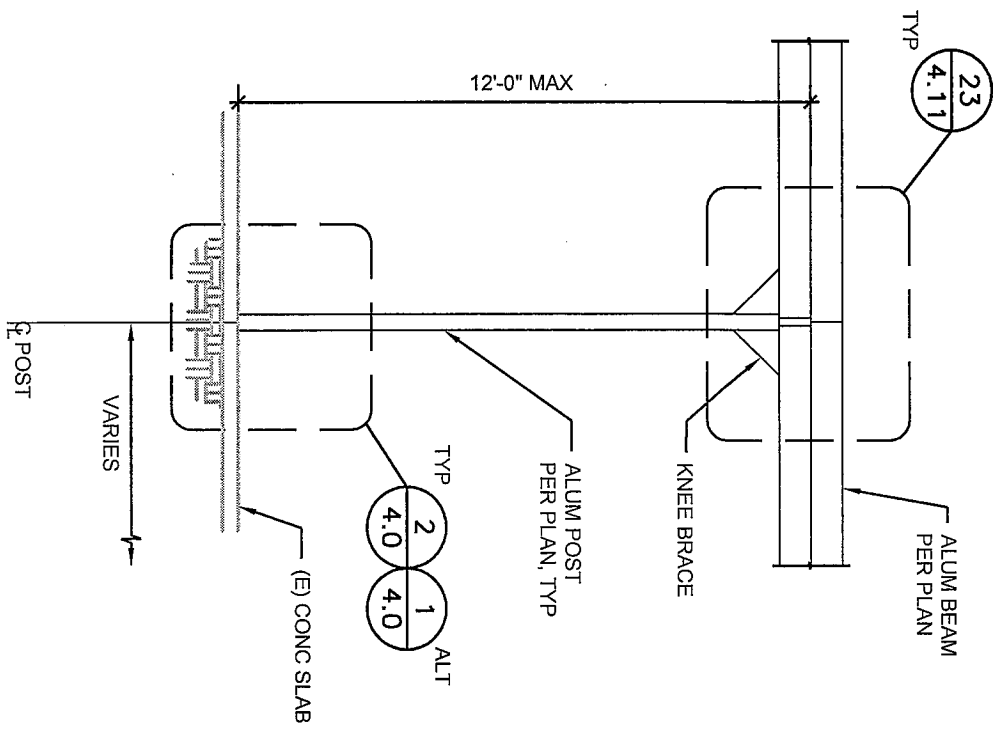
PROJECT: EQUINOX PATIO COVERS
IAPMO EVALUATION SUBMITTAL

REVISION DATE:
1/6/2008

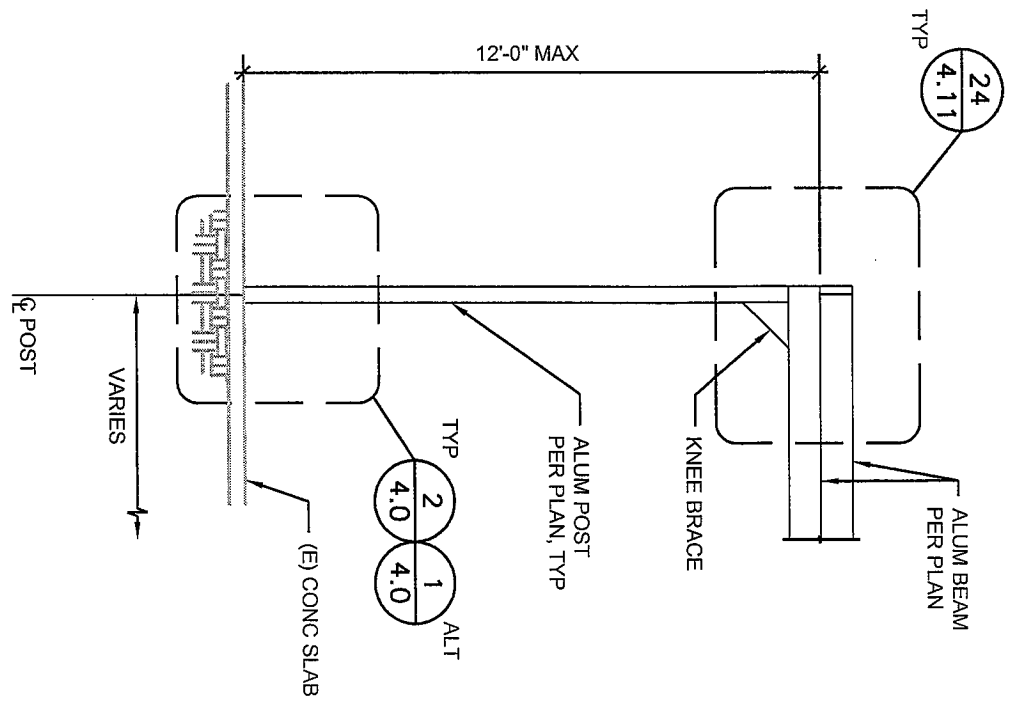
EQUINOX MANUFACTURING, LLC
1316 SO 400 E UNIT C1
ST. GEORGE, UTAH 84790

SHEET:

3.3



9 DETAIL
SCALE: 1/4" = 1'-0"



10 DETAIL
SCALE: 1/4" = 1'-0"

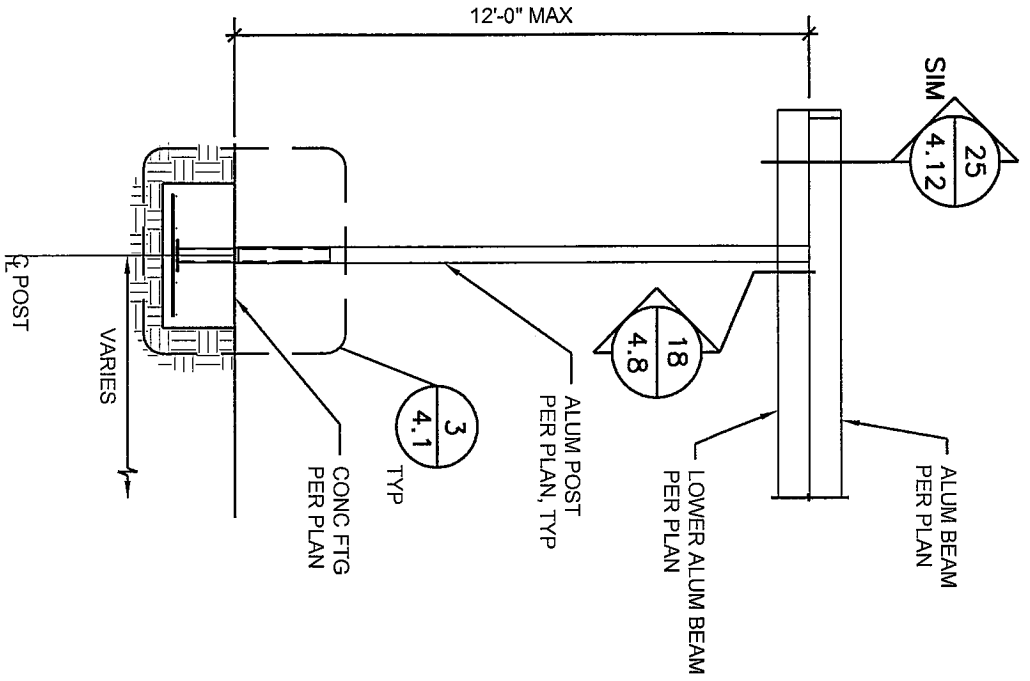
PROJECT: EQUINOX PATIO COVERS
IAPMO EVALUATION SUBMITTAL

REVISION DATE:
1/6/2008

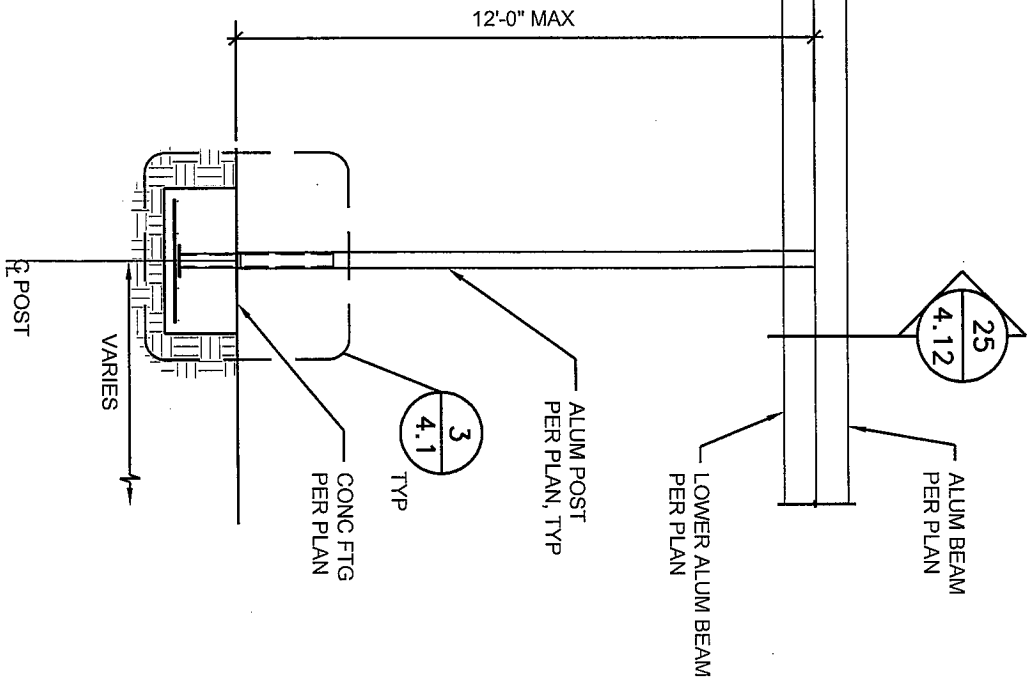
EQUINOX MANUFACTURING, LLC
1316 SO 400 E UNIT C1
ST. GEORGE, UTAH 84790

SHEET:

3.4



11 DETAIL
SCALE: 1/4" = 1'-0"



12 DETAIL
SCALE: 1/4" = 1'-0"

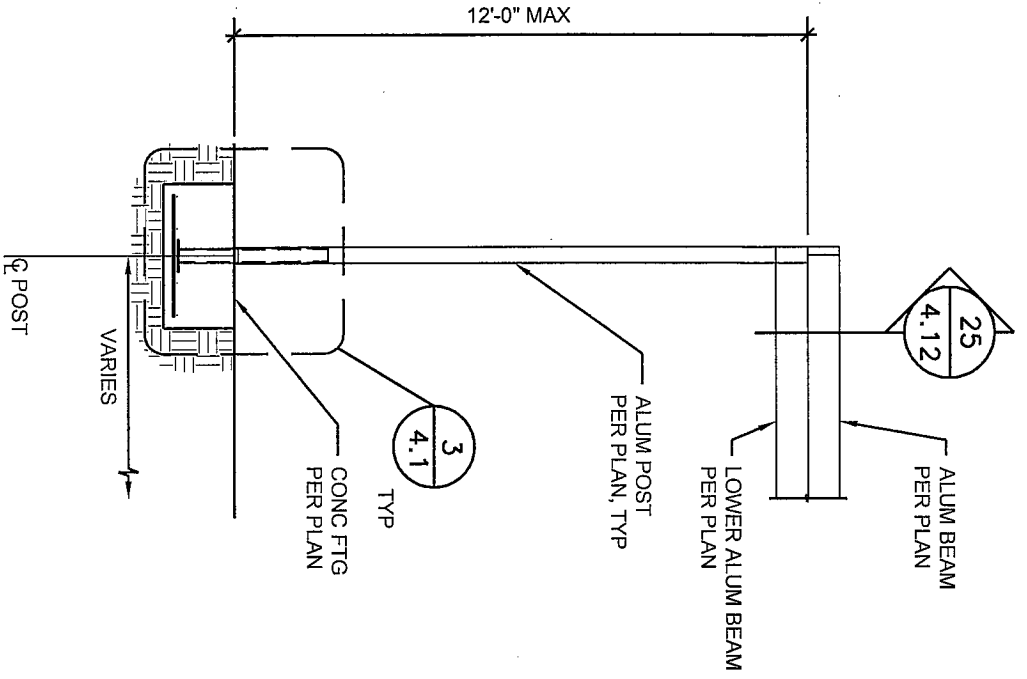
PROJECT: EQUINOX PATIO COVERS
IAPMO EVALUATION SUBMITTAL

REVISION DATE:
1/6/2008

EQUINOX MANUFACTURING, LLC
1316 SO 400 E UNIT C1
ST. GEORGE, UTAH 84790

SHEET:

3.5



13 DETAIL
SCALE: 1/4" = 1'-0"

14 DETAIL
SCALE: 1/4" = 1'-0"

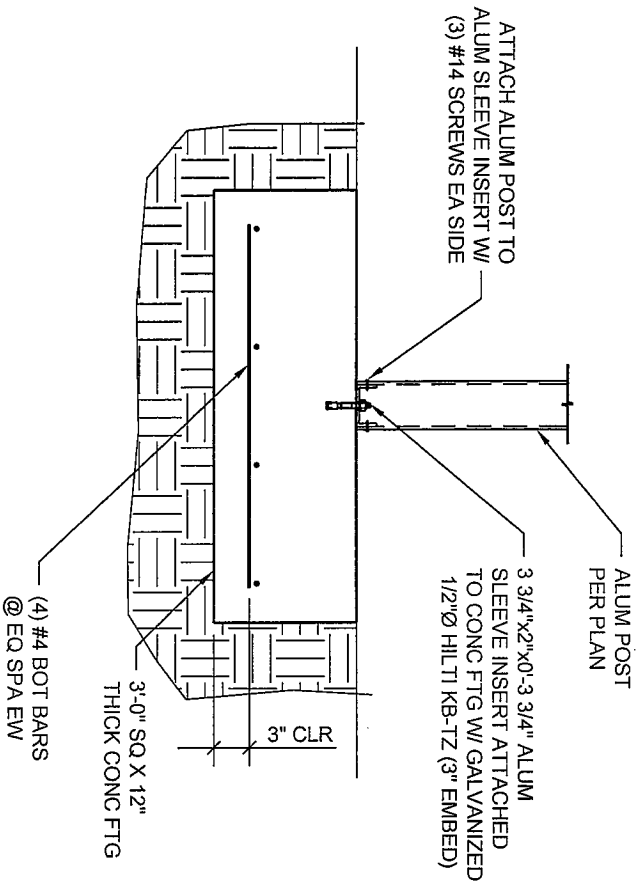
PROJECT: EQUINOX PATIO COVERS
IAPMO EVALUATION SUBMITTAL

REVISION DATE:
1/6/2008

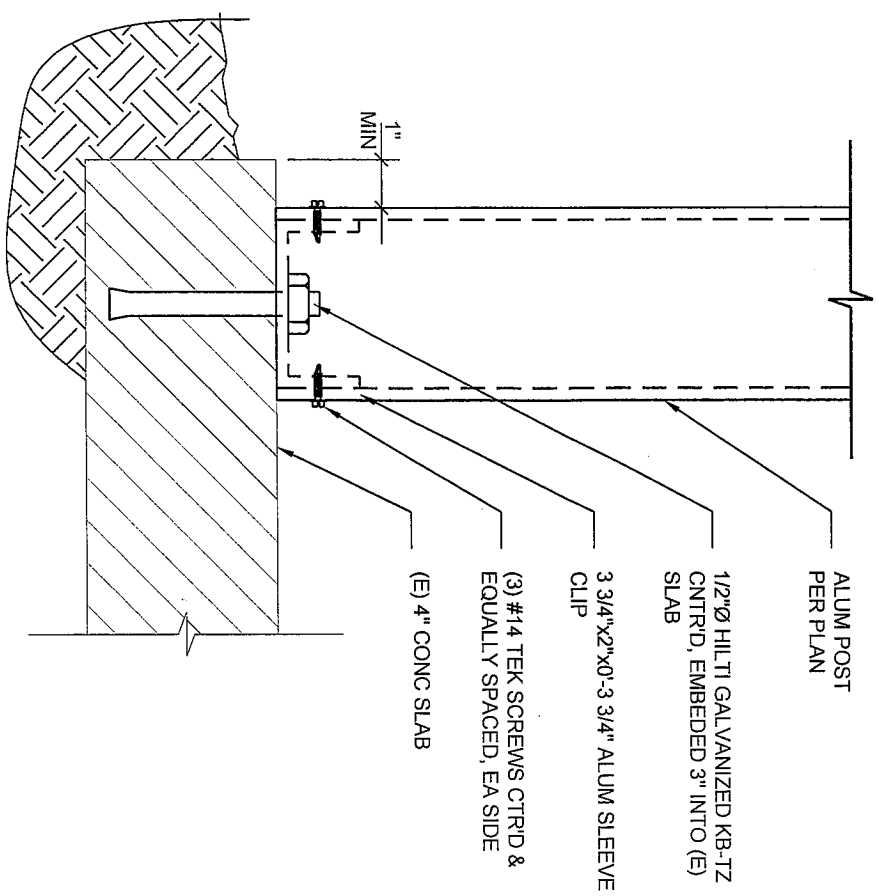
EQUINOX MANUFACTURING, LLC
1316 SO 400 E UNIT C1
ST. GEORGE, UTAH 84790

SHEET:

3.6



1 DETAIL
SCALE: 3/4" = 1'-0"



2 DETAIL
SCALE: 3" = 1'-0"

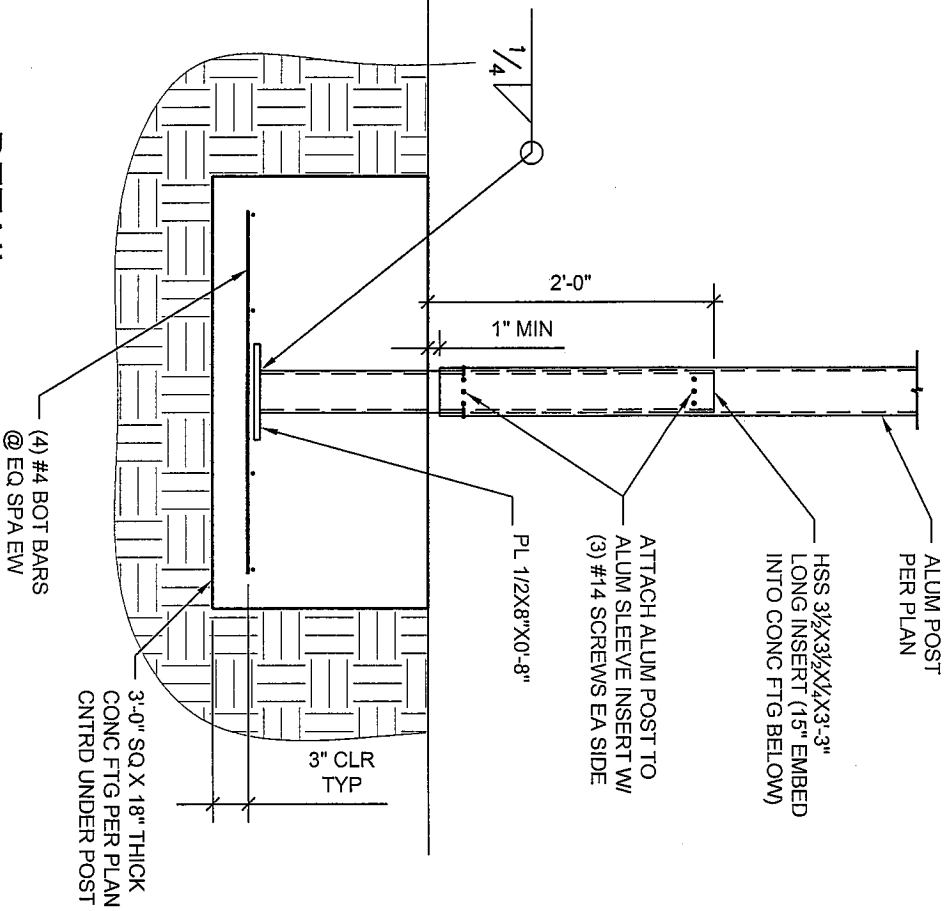
PROJECT:
EQUINOX PATIO COVERS
IAPMO EVALUATION SUBMITTAL

REVISION DATE:
1/6/2008

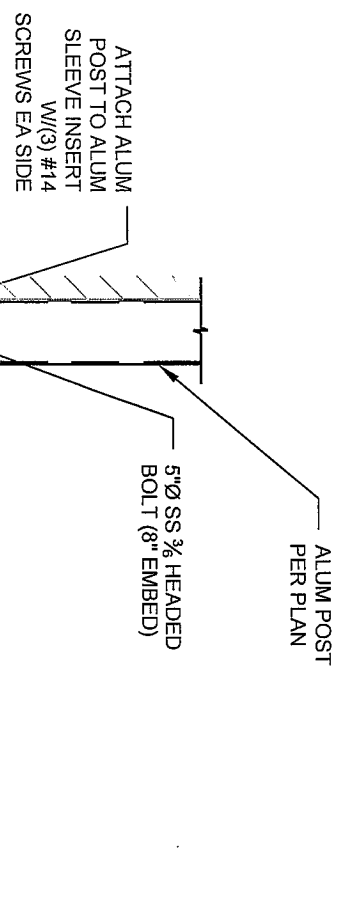
EQUINOX MANUFACTURING, LLC
1316 SO 400 E UNIT C1
ST. GEORGE, UTAH 84790

SHEET:

4.0



3
DETAIL
SCALE: 3/4" = 1'-0"



4
DETAIL
SCALE: 1" = 1'-0"

PROJECT: EQUINOX PATIO COVERS

IAPMO EVALUATION SUBMITTAL

SHEET DESCRIPTION: STRUCTURAL DETAILS

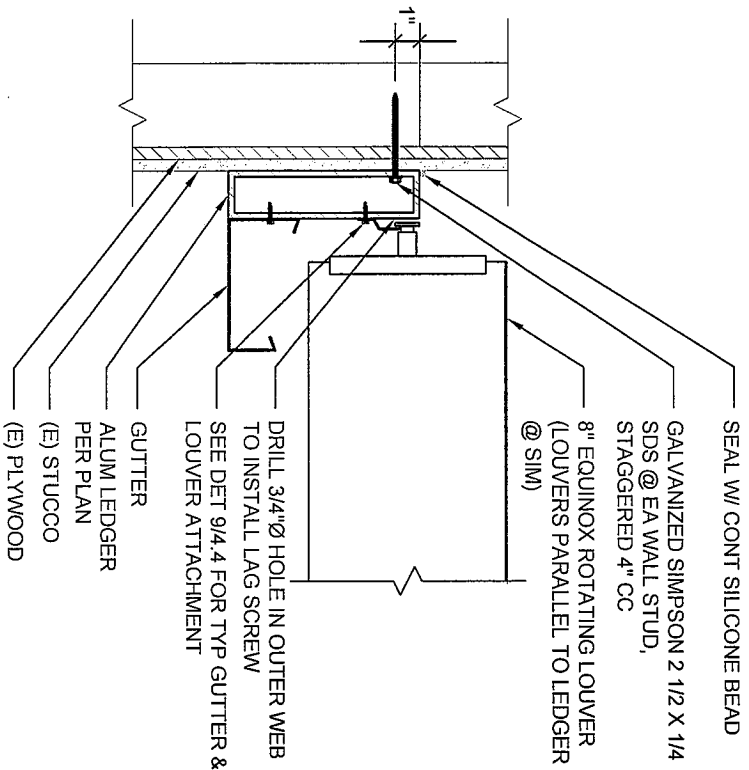
REVISION DATE:

1/6/2008

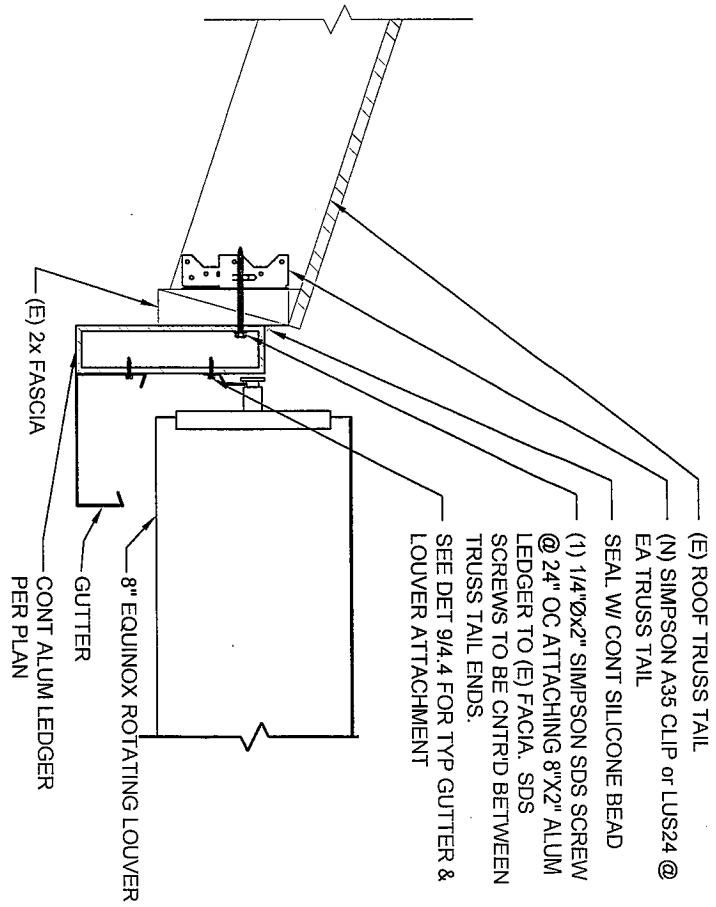
EQUINOX MANUFACTURING, LLC
1316 SO 400 E UNIT C1
ST. GEORGE, UTAH 84790

SHEET:

4.1



5 DETAIL
SCALE: 1 1/2" = 1'-0"



6 DETAIL
SCALE: 1 1/2" = 1'-0"

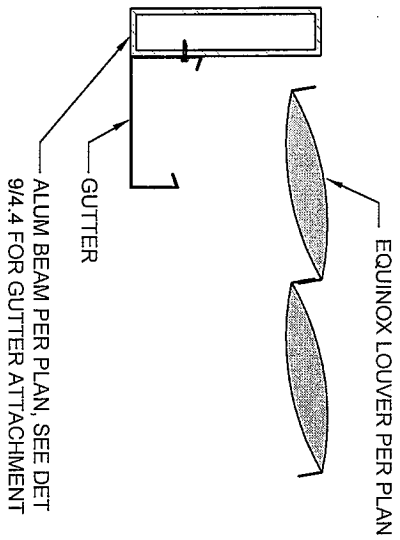
PROJECT: EQUINOX PATIO COVERS
APMO EVALUATION SUBMITTAL

REVISION DATE:
1/6/2008

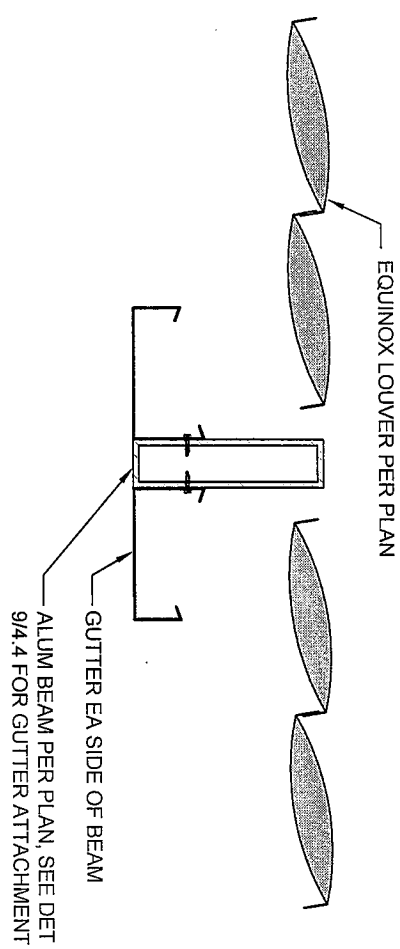
EQUINOX MANUFACTURING, LLC
1316 SO 400 E UNIT C1
ST. GEORGE, UTAH 84790

SHEET:

4.2



7 DETAIL
SCALE: 1 1/2" = 1'-0"



8 DETAIL
SCALE: 1 1/2" = 1'-0"

PROJECT: EQUINOX PATIO COVERS

IAPMO EVALUATION SUBMITTAL

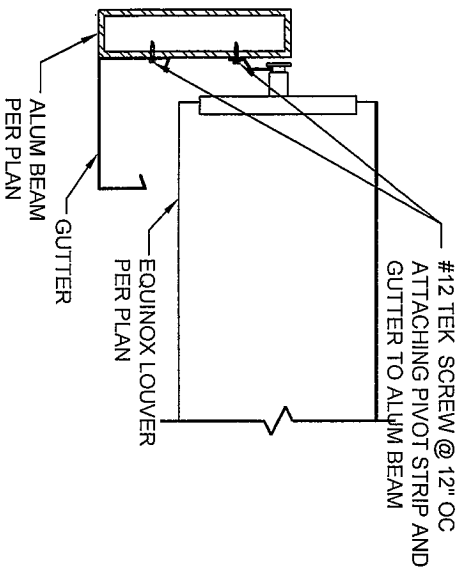
REVISION DATE:
1/6/2008

SHEET DESCRIPTION:
STRUCTURAL DETAILS

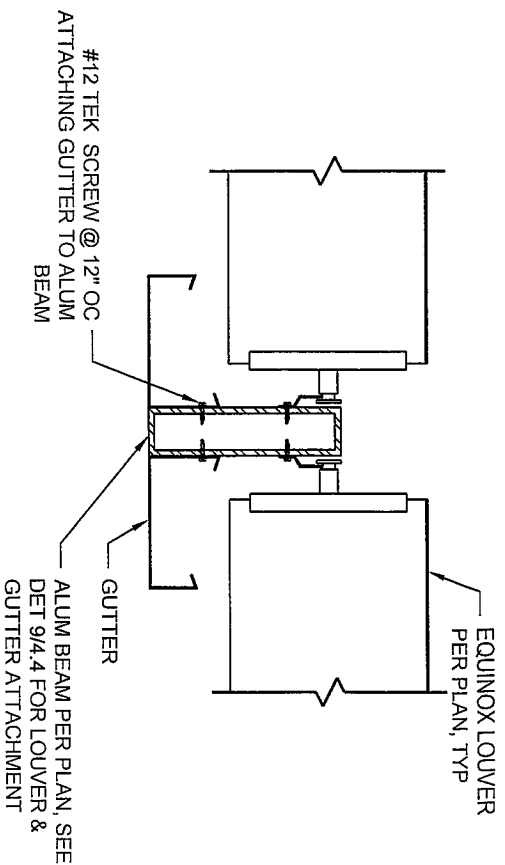
EQUINOX MANUFACTURING, LLC
1316 SO 400 E UNIT C1
ST. GEORGE, UTAH 84790

SHEET:

4.3



9 DETAIL
SCALE: 1 1/2" = 1'-0"



10 DETAIL
SCALE: 1 1/2" = 1'-0"

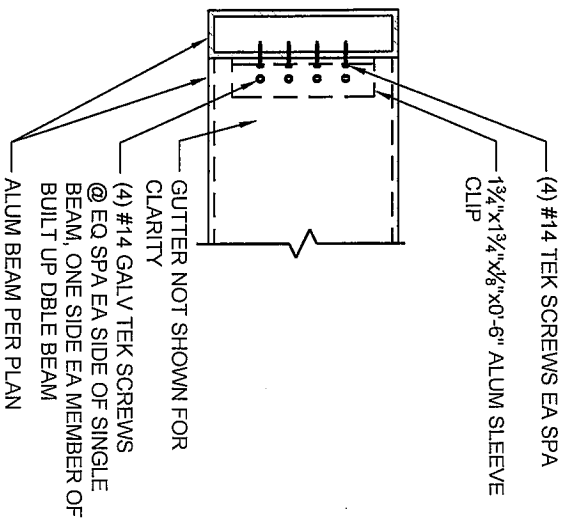
PROJECT: EQUINOX PATIO COVERS
IAPMO EVALUATION SUBMITTAL

REVISION DATE:
1/6/2008

EQUINOX MANUFACTURING, LLC
1316 SO 400 E UNIT C1
ST. GEORGE, UTAH 84790

SHEET:

4.4



11 DETAIL
SCALE: 1 1/2" = 1'-0"

12 DETAIL
SCALE: 1 1/2" = 1'-0"

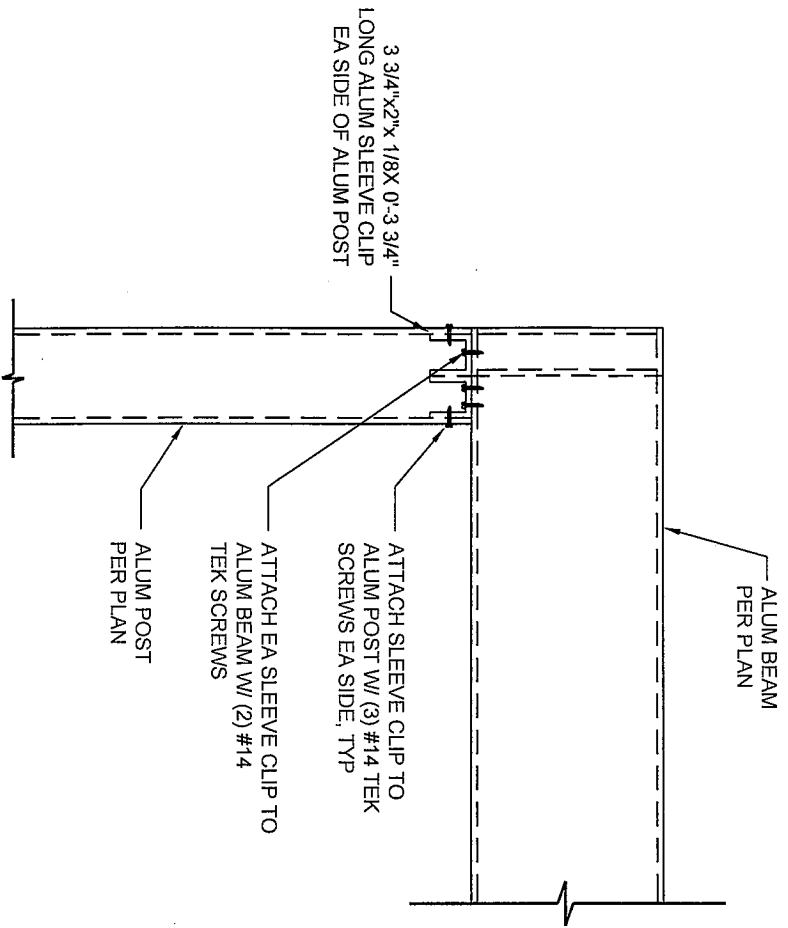
PROJECT: EQUINOX PATIO COVERS
IAPMO EVALUATION SUBMITTAL

REVISION DATE:
1/6/2008

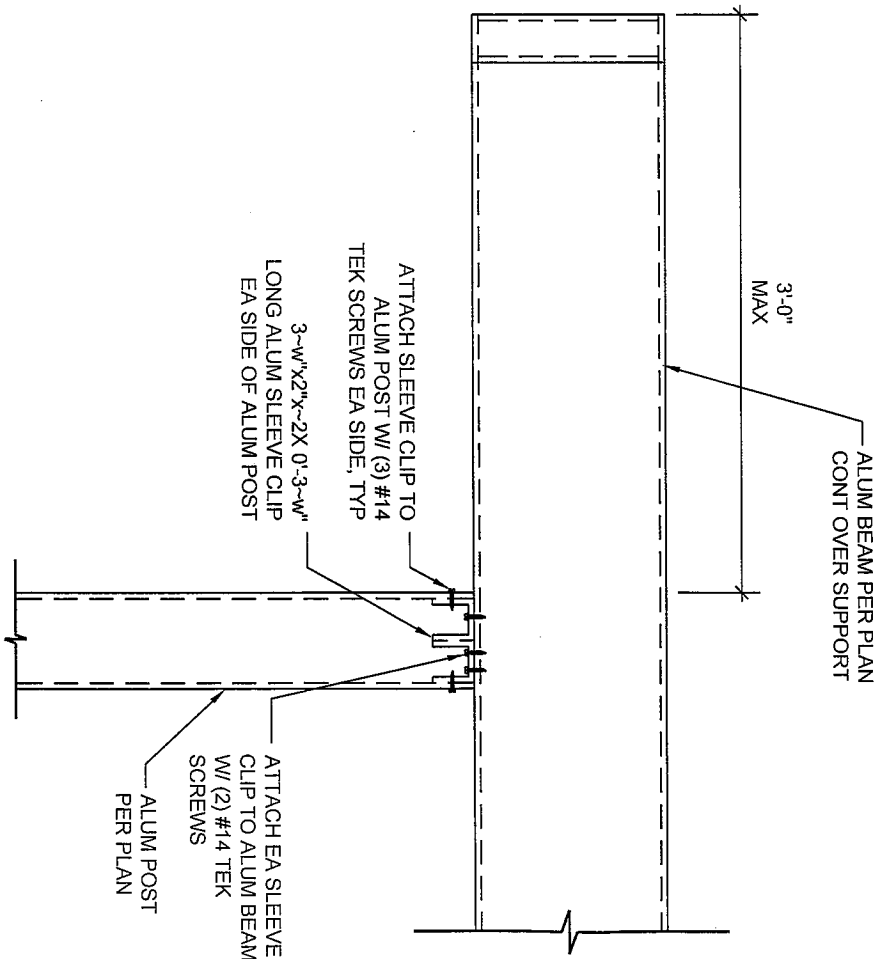
EQUINOX MANUFACTURING, LLC
1316 SO 400 E UNIT C-1
ST. GEORGE, UTAH 84790

SHEET:

4.5



13 DETAIL
SCALE: 1 1/2" = 1'-0"



14 DETAIL
SCALE: 1 1/2" = 1'-0"

PROJECT: EQUINOX PATIO COVERS
IAPMO EVALUATION SUBMITTAL

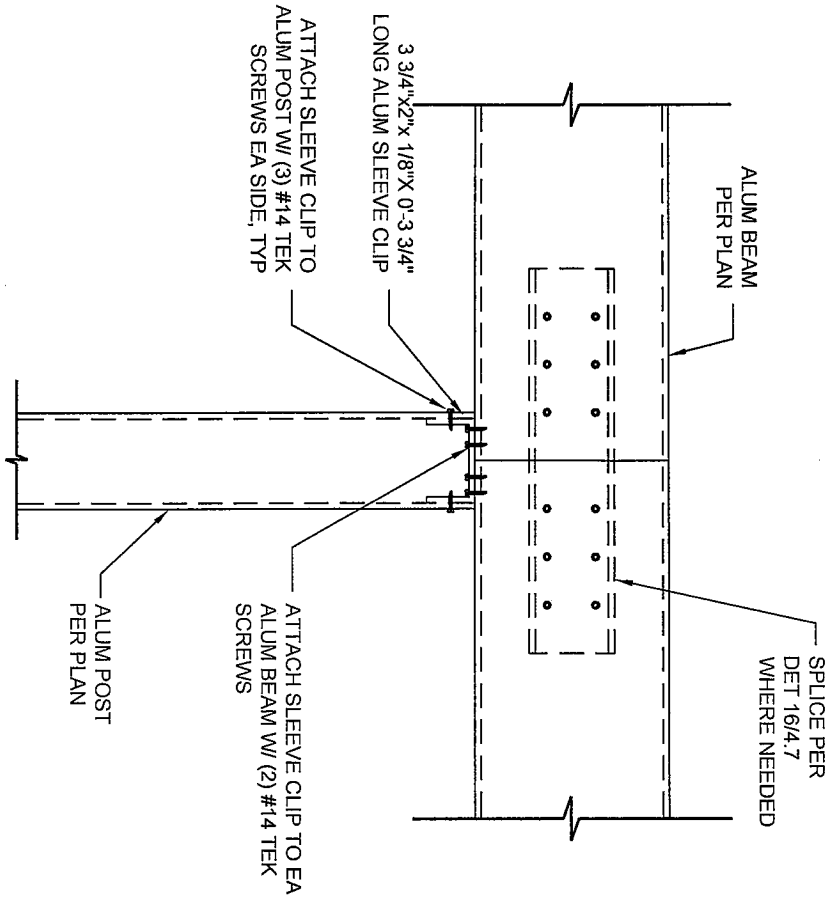
SHEET DESCRIPTION:
STRUCTURAL DETAILS

REVISION DATE:
1/6/2008

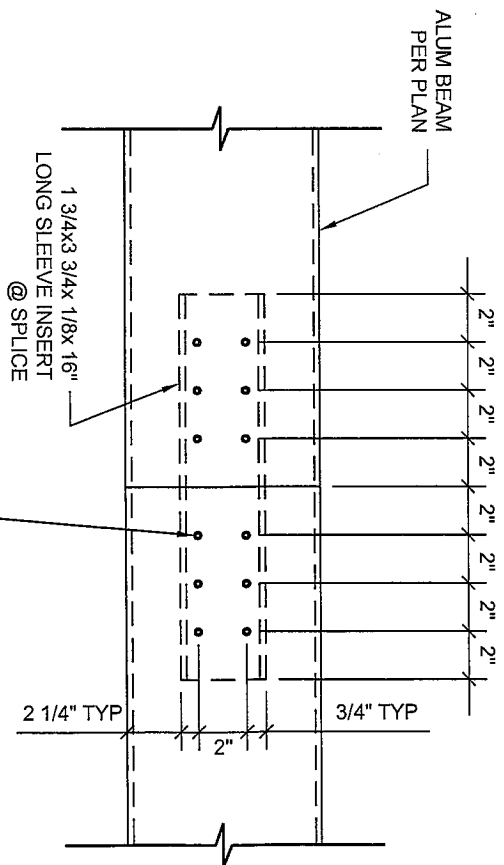
EQUINOX MANUFACTURING, LLC
1316 SO 400 E UNIT C-1
ST. GEORGE, UTAH 84790

SHEET:

4.6



15 DETAIL
SCALE: 1 1/2" = 1'-0"



16 DETAIL
SCALE: 1 1/2" = 1'-0"

PROJECT: EQUINOX PATIO COVERS
IAPMO EVALUATION SUBMITTAL

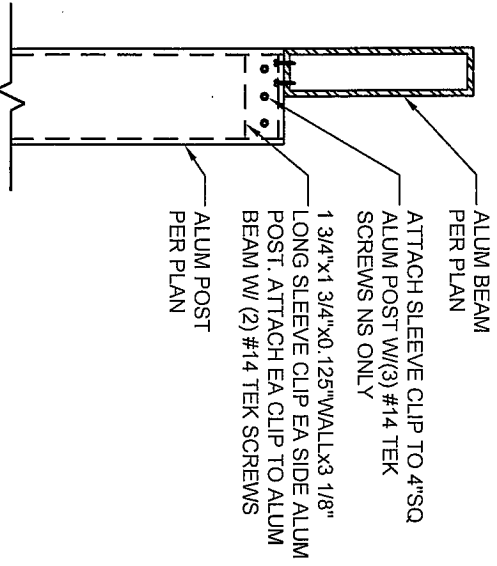
SHEET DESCRIPTION:
STRUCTURAL DETAILS

REVISION DATE:
1/6/2008

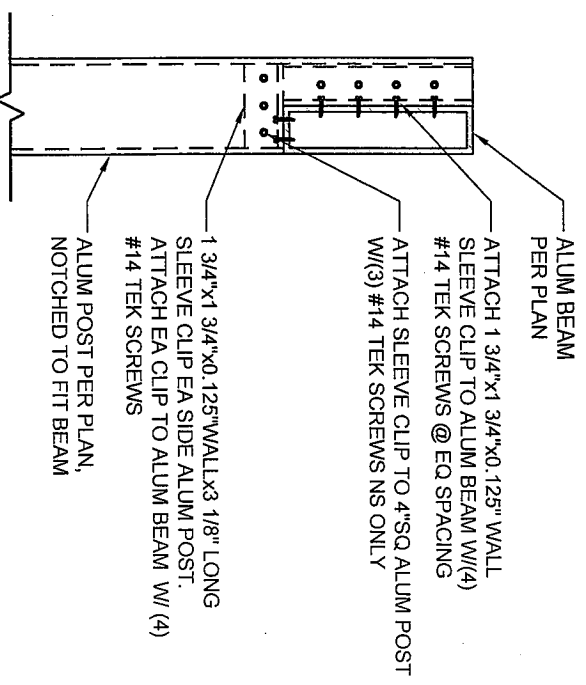
EQUINOX MANUFACTURING, LLC
1316 SO 400 E UNIT C1
ST. GEORGE, UTAH 84790

SHEET:

4.7



17 DETAIL
SCALE: 1 1/2" = 1'-0"



18 DETAIL
SCALE: 1 1/2" = 1'-0"

PROJECT: EQUINOX PATIO COVERS
IAPMO EVALUATION SUBMITTAL

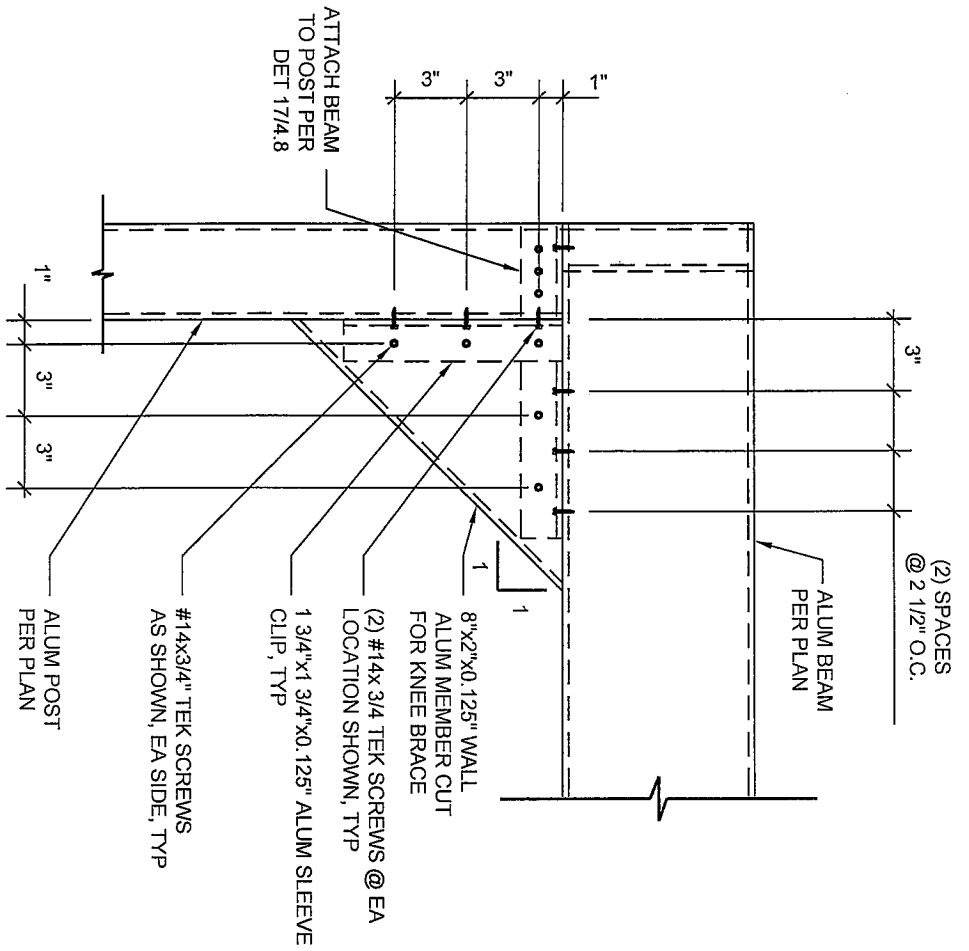
SHEET DESCRIPTION:
STRUCTURAL DETAILS

REVISION DATE:
1/6/2008

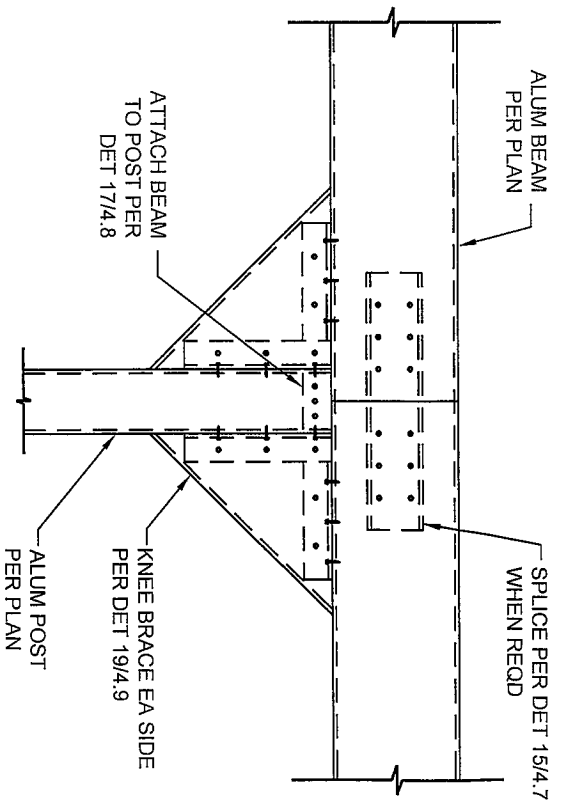
EQUINOX MANUFACTURING, LLC
1316 SO 400 E UNIT C1
ST. GEORGE, UTAH 84790

SHEET:

4.8



19 DETAIL
SCALE: 1 1/2" = 1'-0"



20 DETAIL
SCALE: 1" = 1'-0"

PROJECT: EQUINOX PATIO COVERS

IAPMO EVALUATION SUBMITTAL

SHEET DESCRIPTION: STRUCTURAL DETAILS

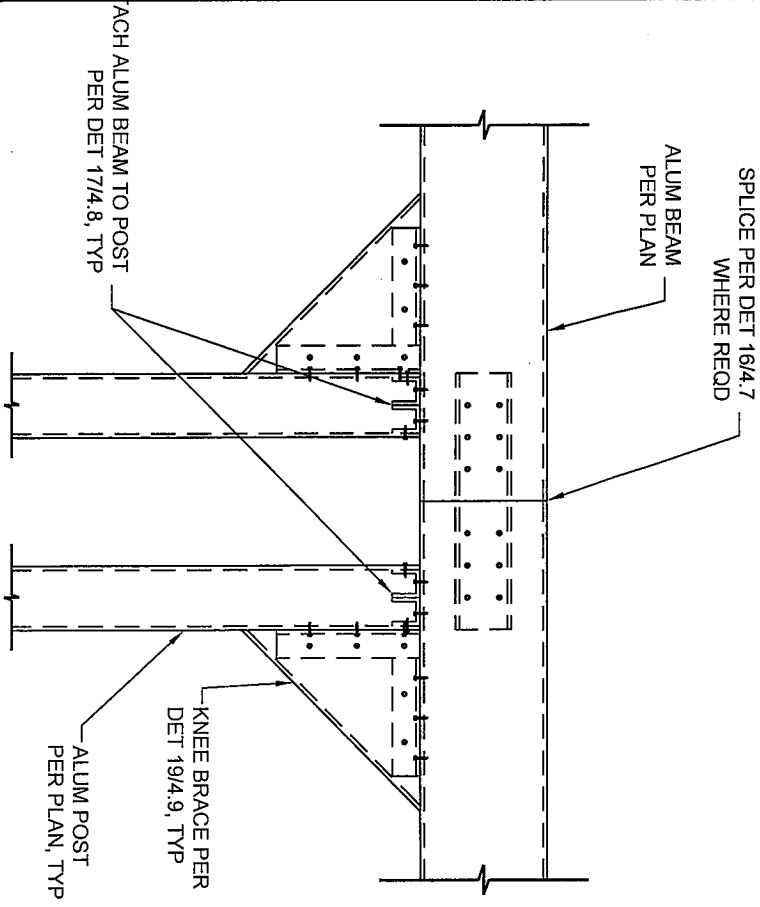
REVISION DATE: 1/6/2008

EQUINOX MANUFACTURING, LLC

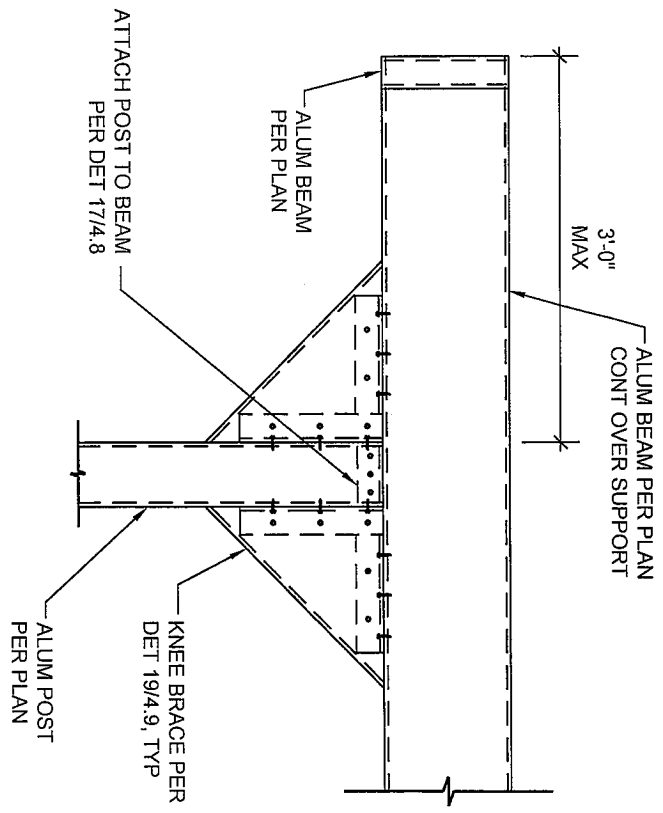
1316 SO 400 E UNIT C1
ST. GEORGE, UTAH 84790

SHEET:

4.9



21 DETAIL
SCALE: 1" = 1'-0"



22 DETAIL
SCALE: 1" = 1'-0"

PROJECT: EQUINOX PATIO COVERS
IAPMO EVALUATION SUBMITTAL

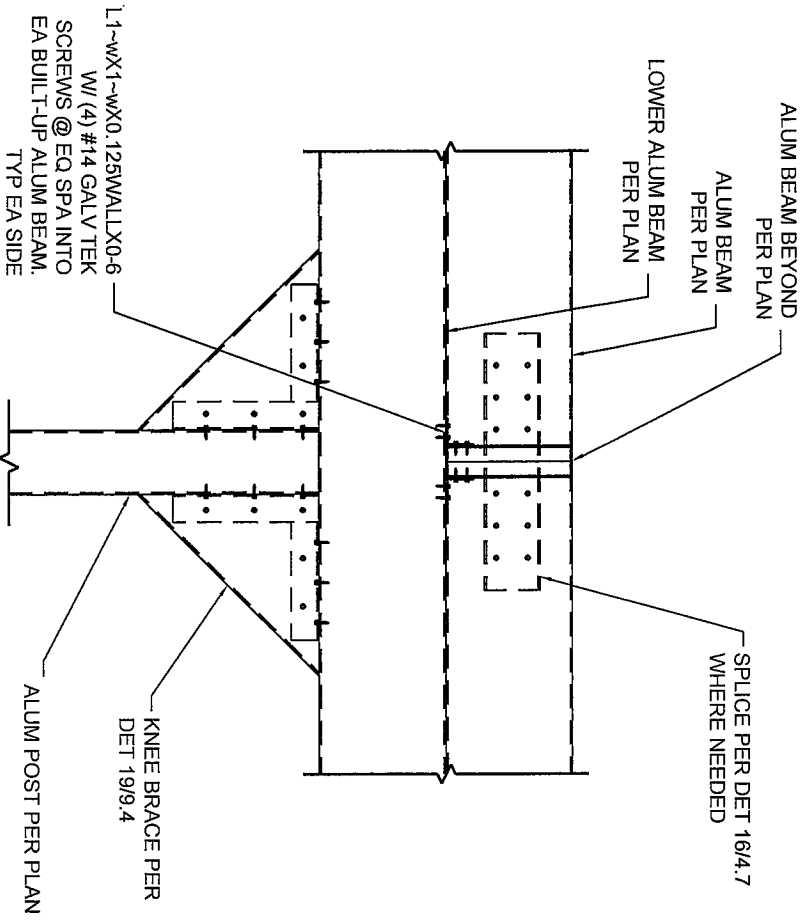
REVISION DATE:
1/6/2008

SHEET DESCRIPTION:
STRUCTURAL DETAILS

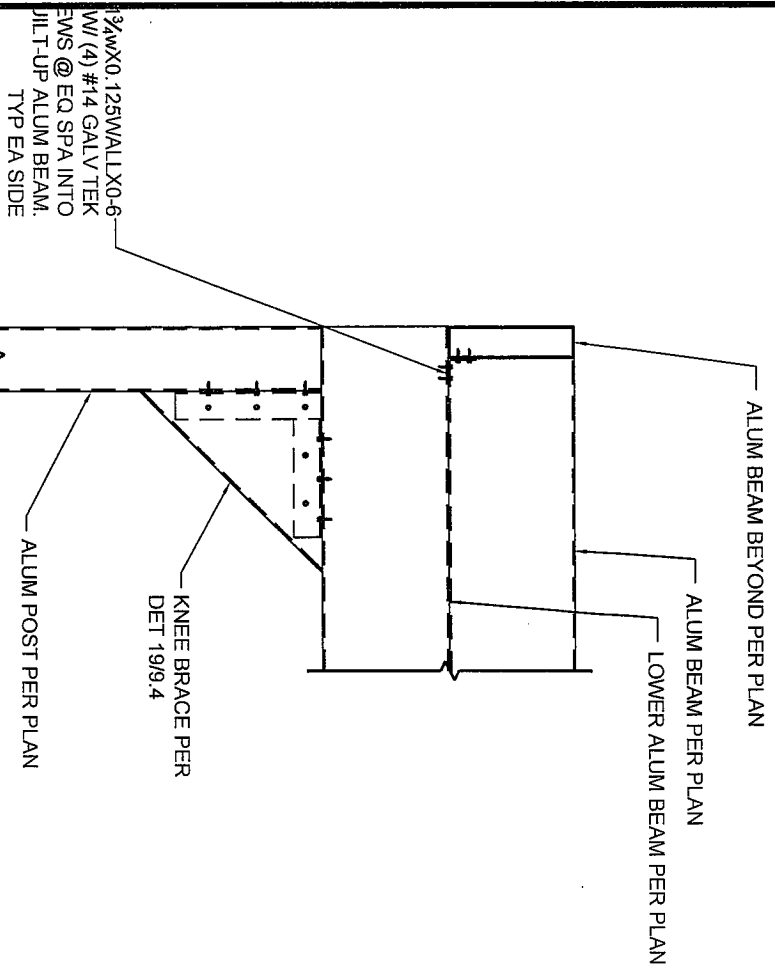
EQUINOX MANUFACTURING, LLC
1316 SO 400 E UNIT C1
ST. GEORGE, UTAH 84790

SHEET:

4.10



23 DETAIL
SCALE: 1" = 1'-0"



24 DETAIL
SCALE: 1" = 1'-0"

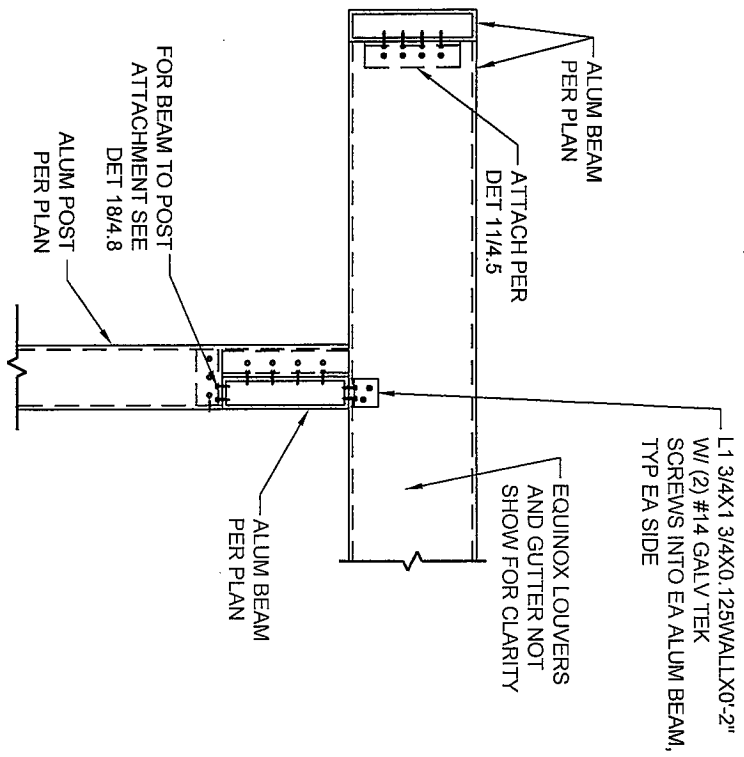
PROJECT: EQUINOX PATIO COVERS
IAPMO EVALUATION SUBMITTAL

REVISION DATE:
1/6/2008

EQUINOX MANUFACTURING, LLC
1316 SO 400 E UNIT C1
ST. GEORGE, UTAH 84790

SHEET:

4.11



25

DETAIL

SCALE: 1" = 1'-0"

26

DETAIL

SCALE: 1" = 1'-0"

PROJECT: EQUINOX PATIO COVERS
IAPMO EVALUATION SUBMITTAL

SHEET DESCRIPTION:
STRUCTURAL DETAILS

REVISION DATE:
1/6/2008

EQUINOX MANUFACTURING, LLC
1316 SO 400 E UNIT C1
ST. GEORGE, UTAH 84790

SHEET:

4.12

27 DETAIL
SCALE: 1" = 1'-0"

PROJECT:

EQUINOX PATIO COVERS
IAPMO EVALUATION SUBMITTAL

REVISION DATE:
1/6/2008

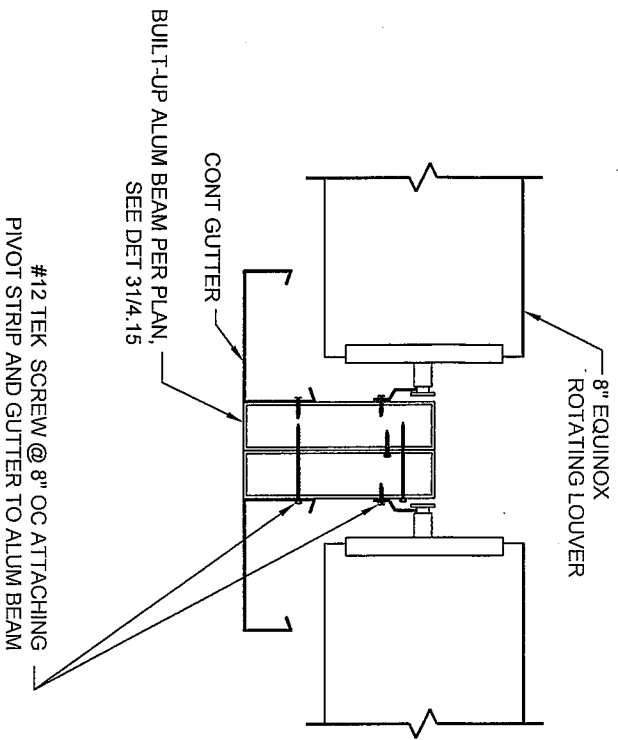
SHEET DESCRIPTION:
STRUCTURAL DETAILS

28 DETAIL
SCALE: 1" = 1'-0"

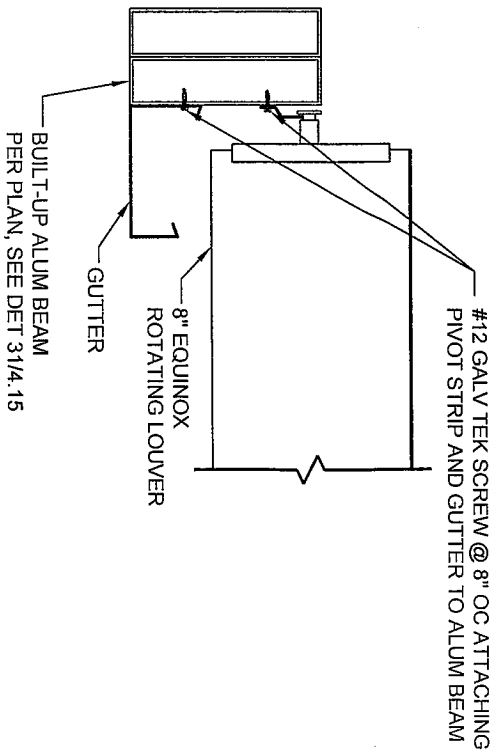
EQUINOX MANUFACTURING, LLC
1316 SO 400 E UNIT C1
ST. GEORGE, UTAH 84790

SHEET:

4.13



29 **DETAIL**
SCALE: 1 1/2" = 1'-0"



30 **DETAIL**
SCALE: 1 1/2" = 1'-0"

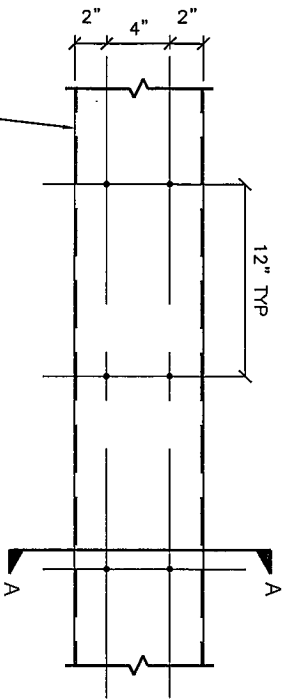
PROJECT: EQUINOX PATIO COVERS
IAPMO EVALUATION SUBMITTAL

REVISION DATE:
1/6/2008

EQUINOX MANUFACTURING, LLC
1316 SO 400 E UNIT C1
ST. GEORGE, UTAH 84790

SHEET:

4.14



BUILT UP ALUM
MEMBER PER PLAN

(2) #14X3" GALV
TEK SCREWS EA
SIDE, TYP



(3) 8X2X0.125 WALL
BUILT-UP ALUM BEAM

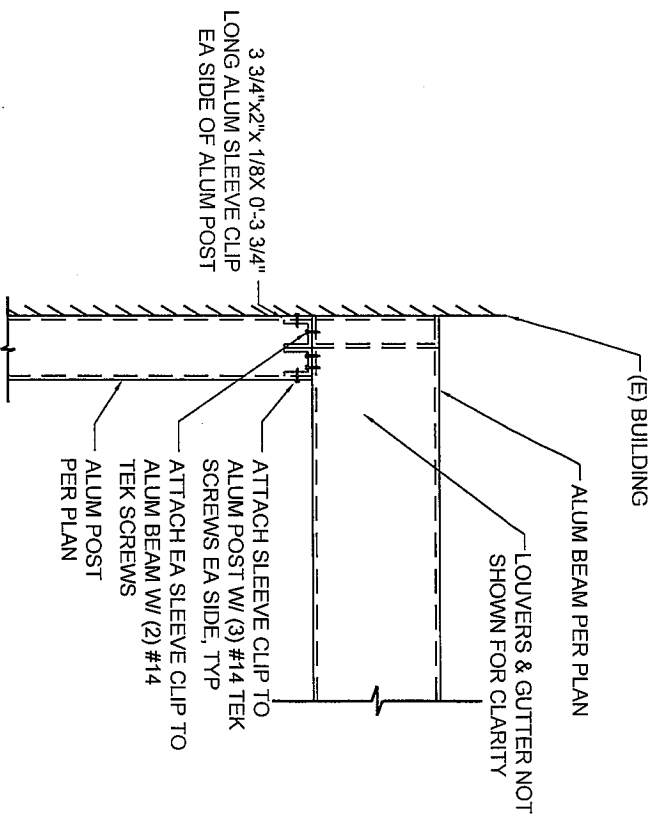
(2) #14X3" GALV
TEK SCREWS, TYP



(2) 8X2X0.125 WALL
BUILT-UP ALUM BEAM

SECTION A-A

31 DETAIL
SCALE: 1" = 1'-0"



32 DETAIL
SCALE: 1" = 1'-0"

PROJECT: EQUINOX PATIO COVERS
IAPMO EVALUATION SUBMITTAL

REVISION DATE:
1/6/2008

EQUINOX MANUFACTURING, LLC
1316 SO 400 E UNIT C1
ST. GEORGE, UTAH 84790

SHEET:

4.15

33

DETAIL

SCALE: 1" = 1'-0"

34

DETAIL

SCALE: 1" = 1'-0"

PROJECT:

EQUINOX PATIO COVERS
IAPMO EVALUATION SUBMITTAL

REVISION DATE:
1/6/2008

SHEET DESCRIPTION:
STRUCTURAL DETAILS

SHEET:

4.16

EQUINOX MANUFACTURING, LLC
1316 SO 400 E UNIT C1
ST. GEORGE, UTAH 84790