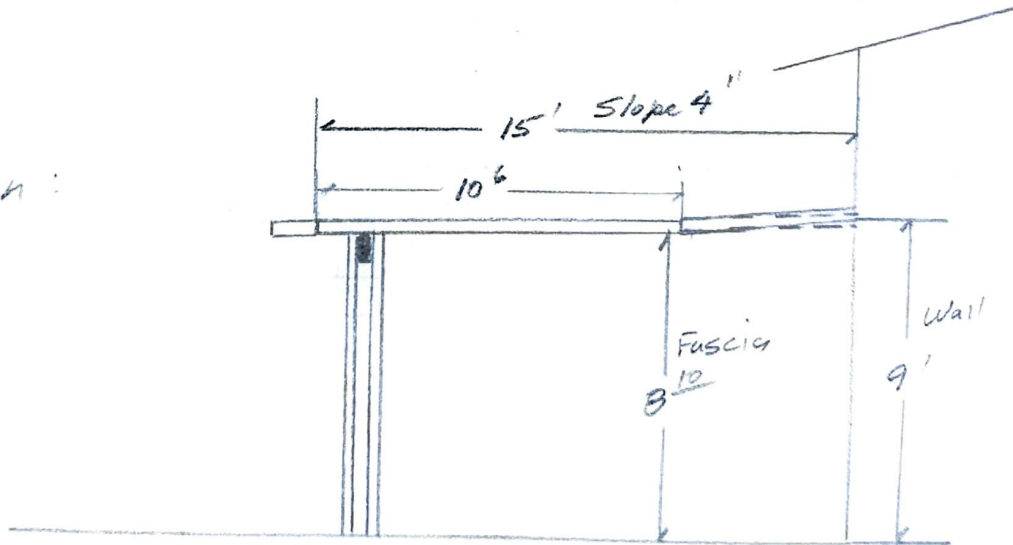


Color:

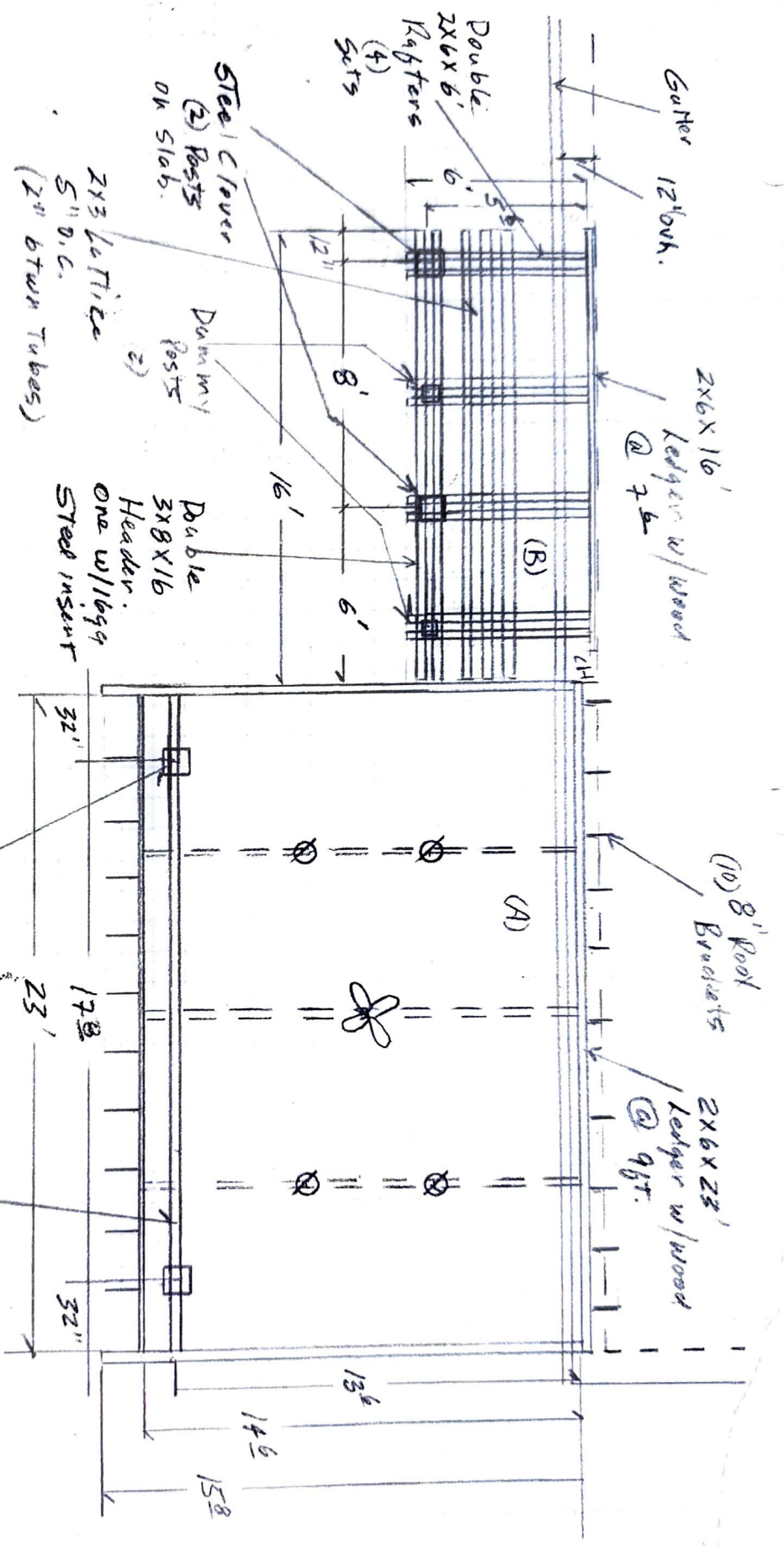
FWD Design:



West Covina CA 91791

GM
Fac. Dir

3/16



Two Adjoining Amenior
Patio Covers (Replacement)

(A) Roof Mount Solid Non Insulated
14'6" Proj x 23' Wide

(B) Open Lattice 2x3 Under Hung
6' Proj x 16' Wide

(A) Wrap Tail
Gutter + Down Spout.

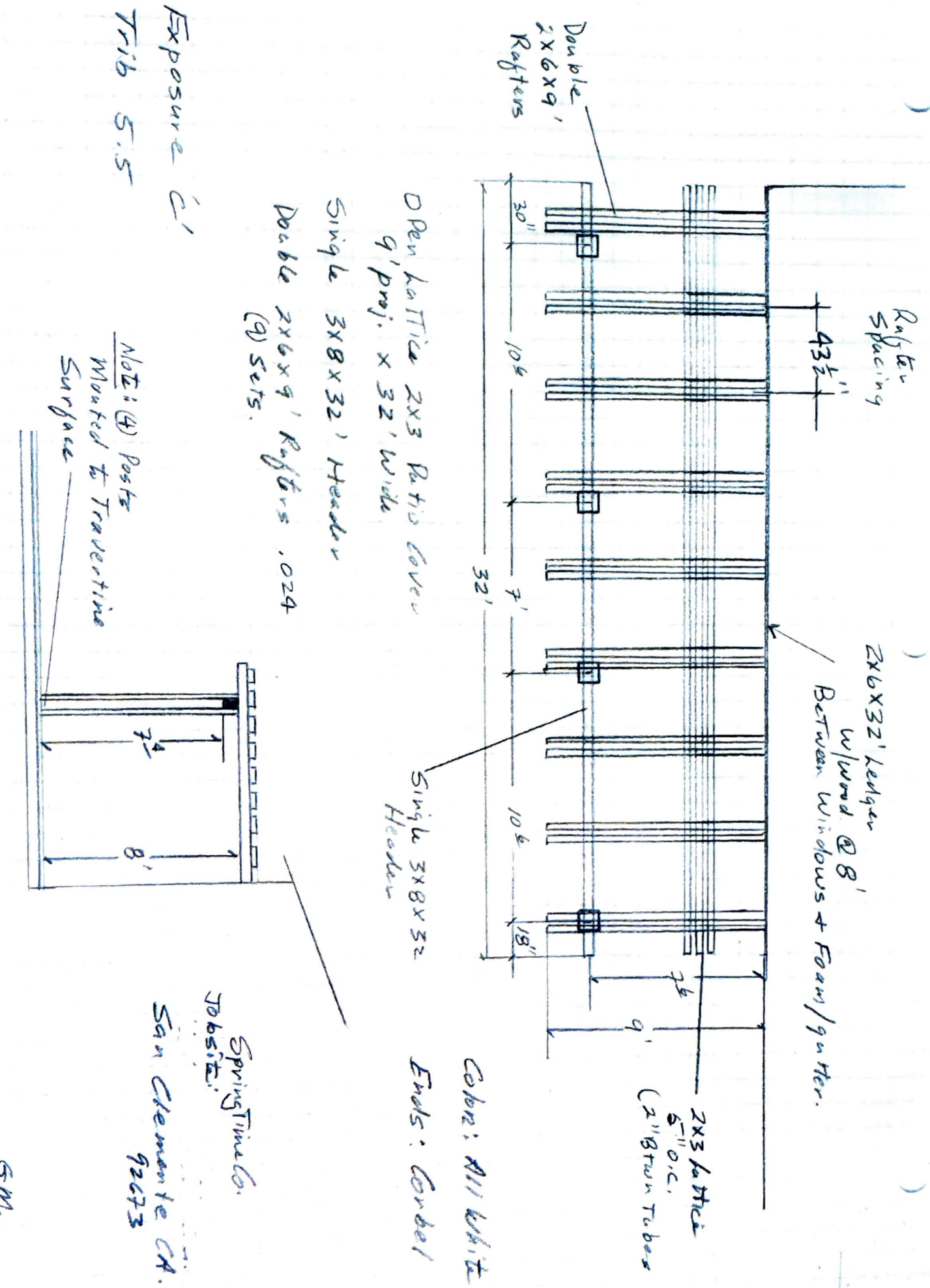
Color: Ceiling, White
Other, Desert Sand.

M.V. 92691

Draw. Rev. 11-6-16

Ends: Base!

GM
Fac. Div
3/16



Rafter Spacing

2x6x32' ledgers w/wood @ 8' Between windows + Fawn/gutter.

2x3 Joists 5" O.C. (2" Struts Tubes)

Double 2x6x9' Rafters

Open lattice 2x3 Ratio cover 9' Proj. x 32' wide

Single 3x8x32' Headers

Double 2x6x9' Rafters .024 (9) sets.

Single 3x8x32' Headers

Color: All White Ends: Corbel

Exposure C1 Trib 5.5

NOTE: (4) Posts Mounted to Travertine Surface

SpringTime Co. Jobsite.

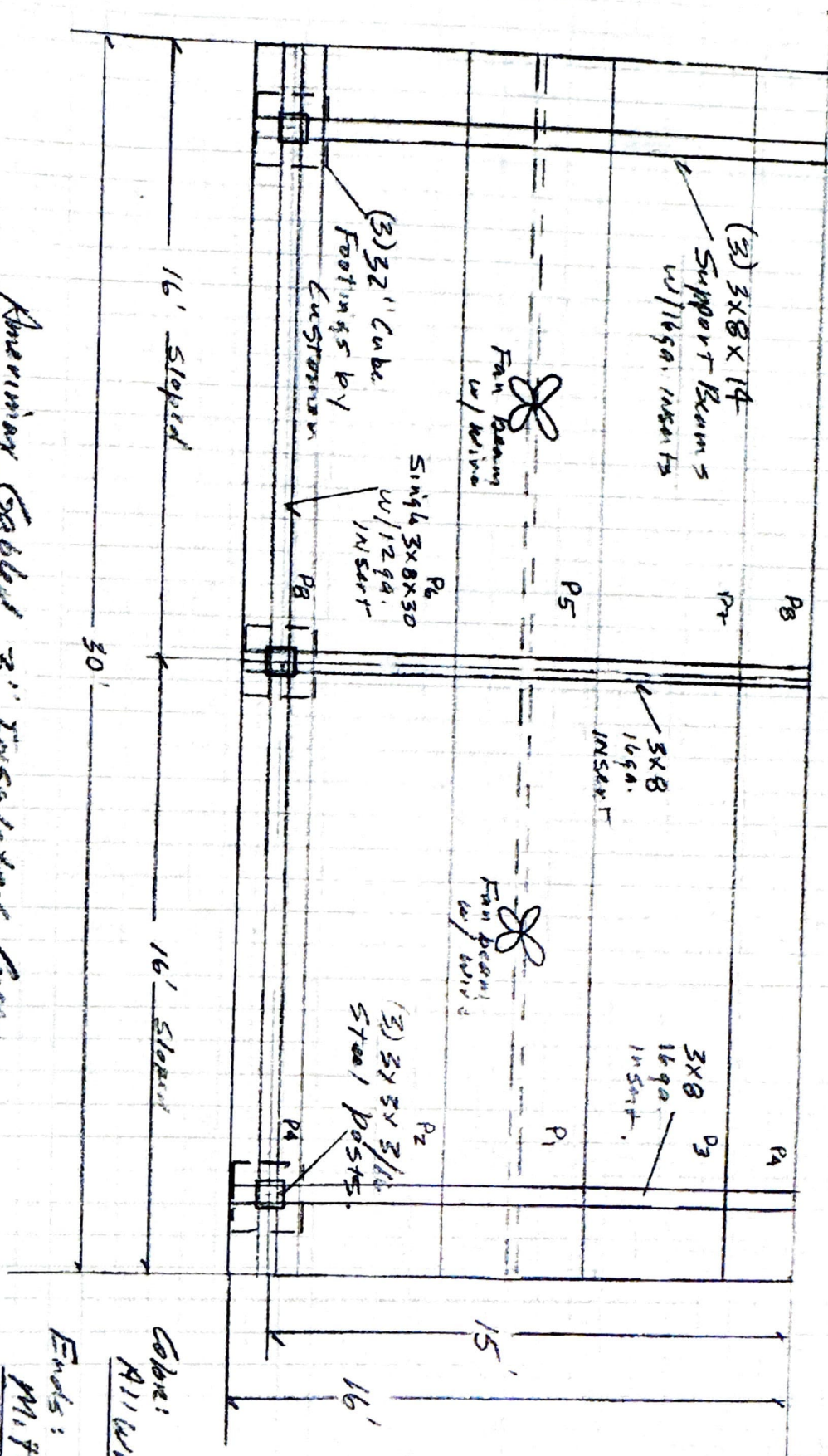
San Clemente CA. 92673

GM. Fac. Div

House
36'

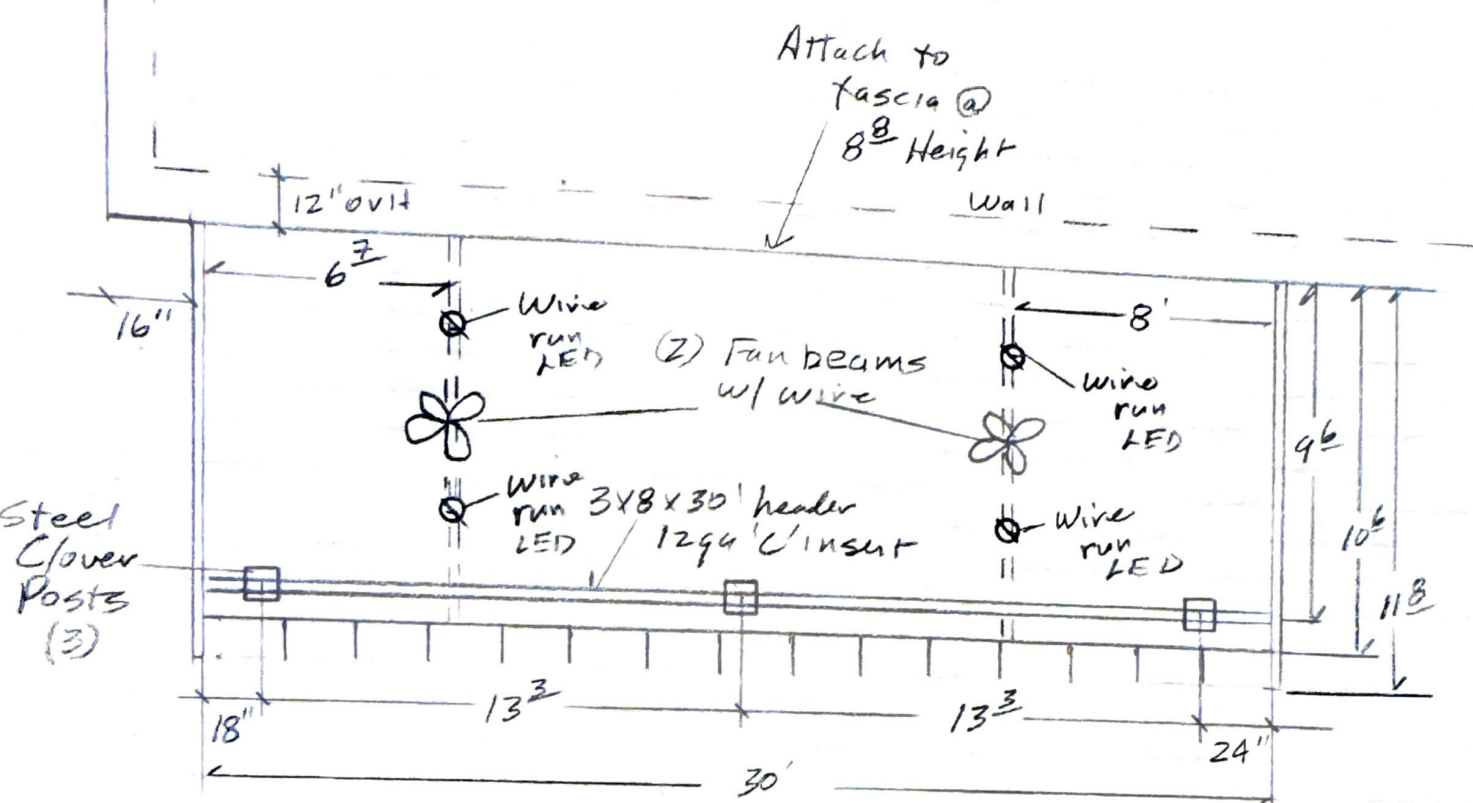
Total (8) 4' x 16' White Panels.
Paint Seal Tape.

Draw 10FZ



Amesbury Gable 3' Insulated Cove
 16' proj x 30' wide (16' x 32' of Mar 11)
 4ft Gable

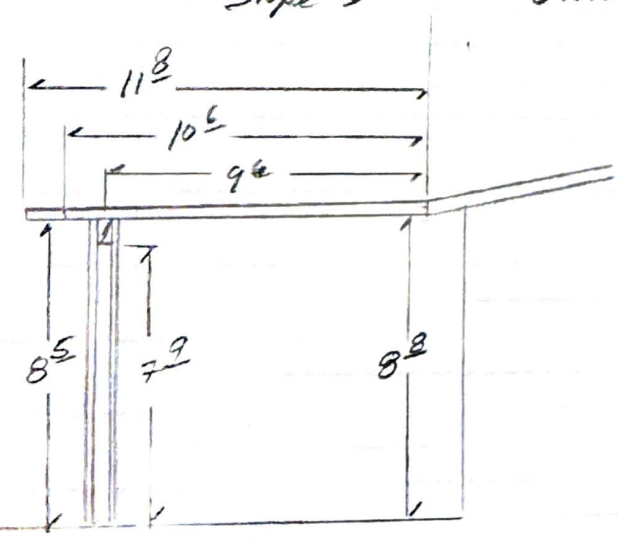
Ends:
 Miter
 Color: All white
 5M Fac. Div
 (1)



* Note: Two wire runs TO FRONT OF COVER - See OWNER.
Slope 3"

Amers may Solid Non-Insulated Cover
10' proj x 30' wide

* Post on top of Existing Footings.



Color: All White
Ends: Scallop

Fullerton CA. 92833

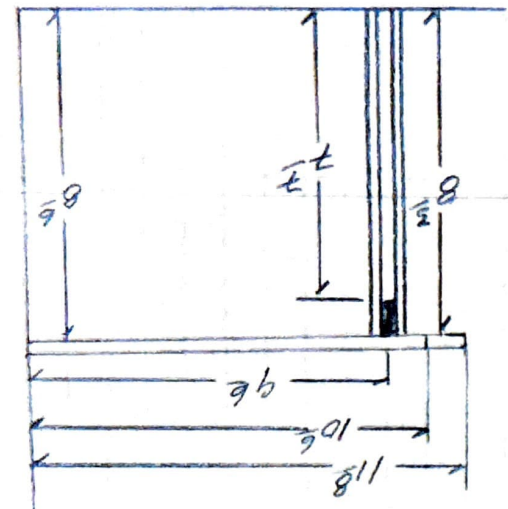
GM
Fac Div
 $\frac{3}{16}$

3
16

GM
Fac. Dir.

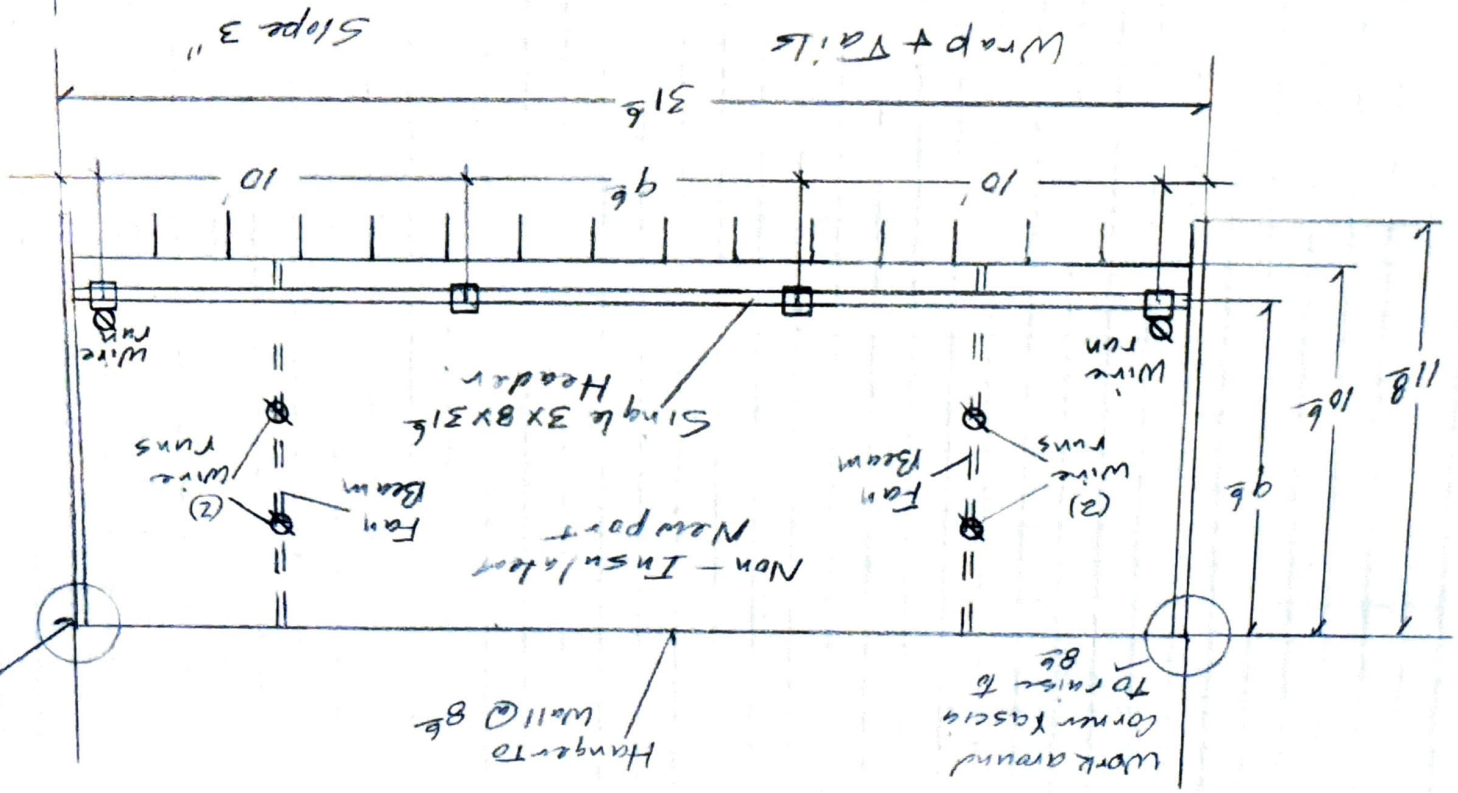
Ends: Scallop.

Color: Ceiling, Desert Sand
Other, Latté



Mission No. 92691

92691



Work cover around corner fascia to raise to 8 1/2

Hangers to wall @ 8 1/2

Work around corner fascia to raise to 8 1/2